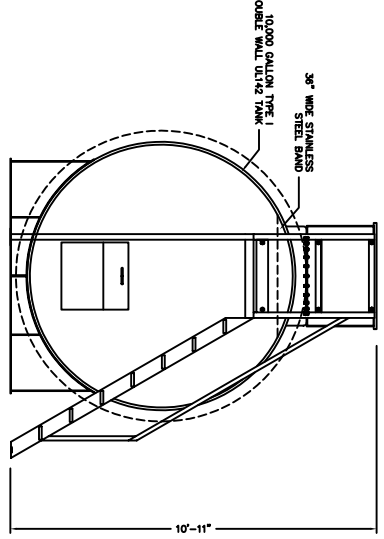
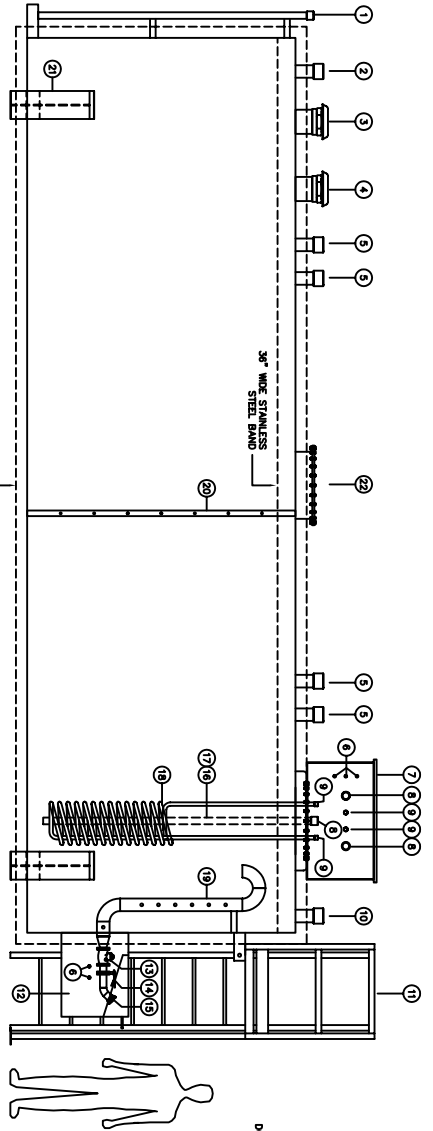


ITEM	QTY	DESCRIPTION
1	1	2" LEAK MONITORING FITTING
2	1	4" GRID FOR VENT
3	1	6" PRIMARY TANK EMERGENCY VENT
4	1	6" INTERSTITIAL EMERGENCY VENT
5	4	4" GRID - SPARE
6	5	3/4" GRID FOR ELECTRICAL CONDUIT
7	1	INSULATED SPRING SUMP
8	2	2" GRID FOR OIL SUPPLY & RETURN
9	2	1-1/4" GRID FOR STEAM CONNECTIONS
10	1	4" GRID FOR STEAK CONNECTIONS
11	1	STAIR / PLATFORM / HANGAR
12	1	FILL BOX
13	1	2" CHECK VALVE
14	1	2" BUTTERFLY VALVE
15	1	2" FILL ADAPTER AND CAP
16	1	2" SPRAY DROP TUBE
17	1	2" RETURN DROP TUBE
18	1	STEAM COIL
19	1	FILL PIPE
20	1	RETURN ACCESS LADDER
21	2	TANK SADDLE
22	1	24" ACCESS DRAINWAY

**NOTES**

INTERIOR AND EXTERIOR FINISH SHALL BE CARBON STEEL UNLESS OTHERWISE NOTED.  
 TANK TO BE LEAK TESTED PER UL42 PRIOR TO SHIP.  
 EXTERIOR FINISH : \_\_\_\_\_



**ARPO-POWER**  
 UNITIZED FUELER, INC.  
 103 SMITHTOWN BLVD  
 SMITHTOWN, NY 11787

DRAWING TITLE  
**10,000 GAL.  
 #6 OIL TANK**

REV	DATE	BY	REVISION DESCRIPTION

**CONSTRUCTION APPROVAL**

PRINT NAME \_\_\_\_\_  
 SIGNATURE \_\_\_\_\_  
 DATE \_\_\_\_\_

DWG NO: **AP10K-#6**  
 SCALE: 4" = 1'-0"  
 SHEET: 1 OF 1 DATE: 4/3/00

ALL RIGHTS RESERVED. THIS DRAWING OR ANY PART THEREOF MUST NOT BE REPRODUCED IN ANY FORM WITHOUT WRITTEN PERMISSION FROM ARPO-POWER UNITIZED FUELER, INC.