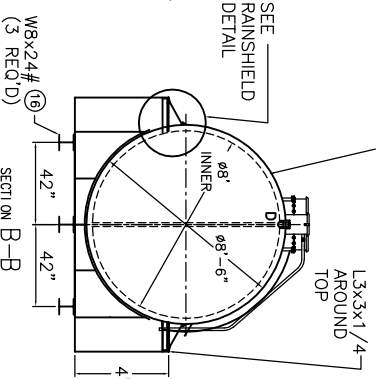
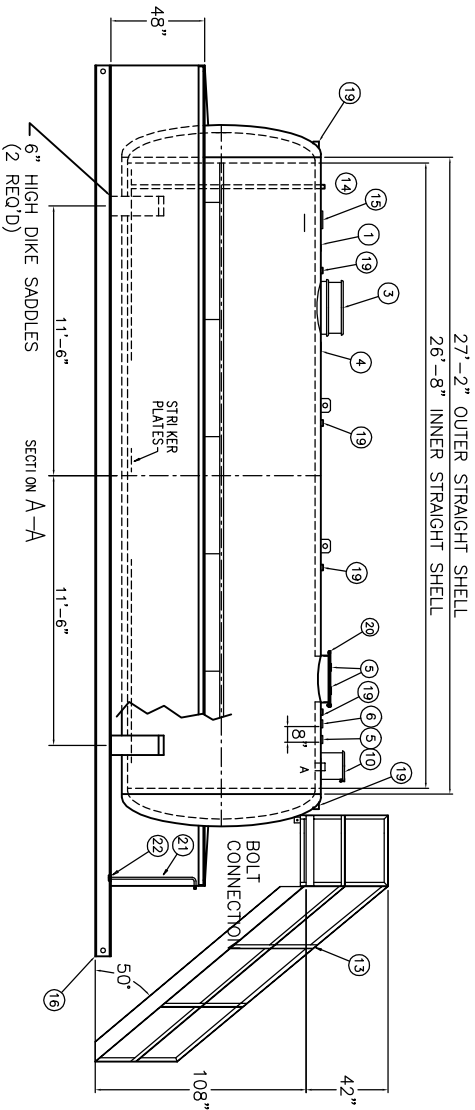
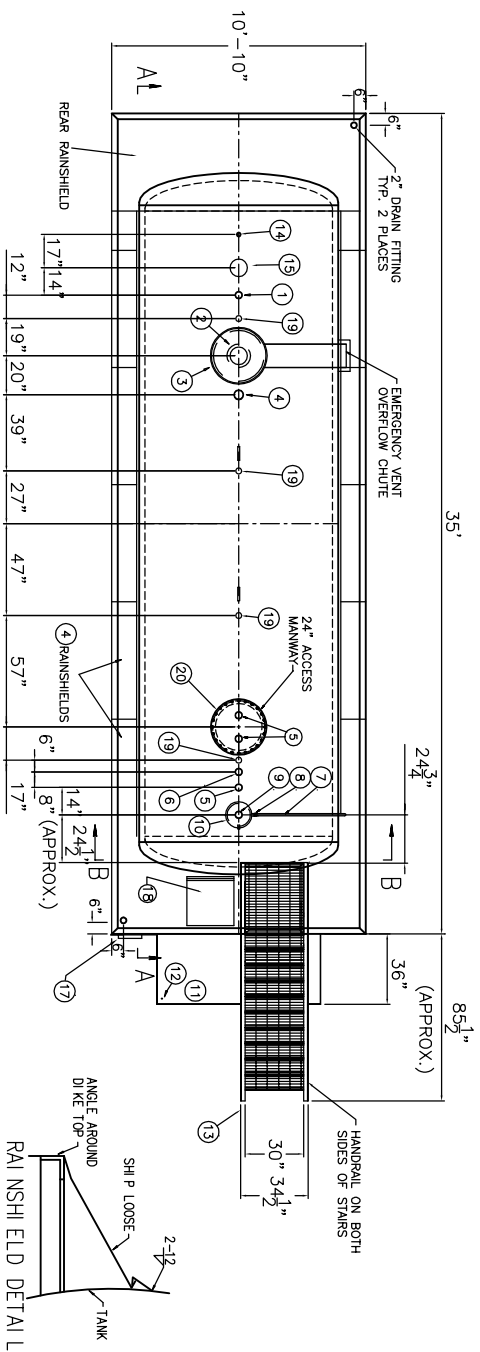
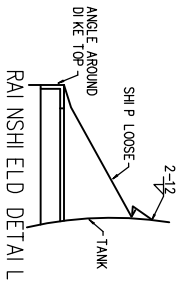


SHIP LOOSE

8" - 8 OZ. EMERGENCY VENT
VENT DEFLECTOR ASSEMBLY
STAIRS & PLATFORM
RAIN SHIELDS



3" LIGHT INSULATION
ON MATERIAL WITHIN
THE INTERSPACE



SPECIFICATIONS

TANK	
CAPACITY - 10,000 GALLON	
TANK MATERIAL - MILD CARBON STEEL	
THICKNESS INNER- HEAD - 5/16" STD FLG'D & DISHED, SHELL - 1/4"	
THICKNESS OUTER- HEAD - 5/16" STD FLG'D & DISHED, SHELL 1/4"	
CONSTRUCTION - INNER & OUTER - LAP WELD OUTSIDE ONLY	
TANK TEST - INNER - 20PSIG HYDROTEST, OUTER - 5 PSIG AIR	
INT. FINISH - NONE	
EXT. FINISH - SP6 BLAST, WHITE EPOXY PAINT SYSTEM	
LABEL - UL 142 & UL 2085, FIREGUARD, AND NEW YORK CITY DIKE	
CAPACITY - 11,000 GALLON	
MATERIAL - 1/4" MILD CARBON STEEL	
CONSTRUCTION - WELD IN AND OUT	
PAINT - ALL - SHOP PRIMER	
FITTINGS LEGEND	
1	3" NORMAL VENT FITTING
2	8" FLANGE W/ THREADED COMPANION FLANGE FOR PRIMARY EMERGENCY VENT USE
3	VENT DEFLECTOR ASSEMBLY - SHIPPED LOOSE
4	4" FITTING
5	3" FITTING
6	3" FOPLG
7	1" OVERFLOW PIPE - SHIPPED LOOSE
8	1" PIPE UNION
9	4" FILL FITTING
10	FILL CONTAINMENT CHAMBER
11	DRIP PAN PLATFORM WITH 2" LIP
12	1/2" DRAIN FITTING
13	STAIRS, PLATFORM & HANDRAIL - PAINT: SHOP PRIMER
14	2" MONITOR PIPE, MALE NPT END
15	8" FNPT FITTING THROUGH OUTER SHELL ONLY - MARK WITH SPECIAL WARNING LABEL
16	8" WF (3)
17	-
18	RAINSHIELD ACCESS DOOR
19	2" FITTING THROUGH OUTER SHELL ONLY WITH CAST IRON PLUG - MFG USE ONLY
20	2 1/2" x 3/8" PLATE TIGHT BOLT MANWAY W/ 1/8" THICK NEO-CORK GASKET
21	3/4" PUMPOUT PIPE
22	3" PIPE CAP SUMP

AREO-POWER ®

TITLE
10000 GAL. AREO FUELER
NEW YORK CITY FIREGUARD

U.S. PATENT # 4895272

CANADIAN PATENT APPLIED FOR

SCALE 3/16"=1'

DATE

DRAWN BY XXX

REV #

REV DATE

DWG. NO. FGDKRSPF10K

All rights reserved. This drawing or any part thereof must not be reproduced in any form without the written permission of Areo-Power Unified Fueller, Inc.