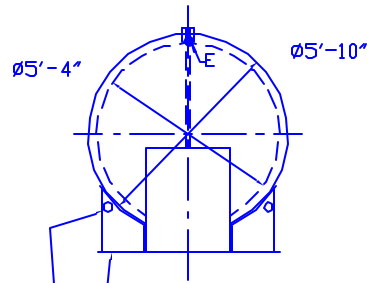


NOTE:  
 ALL RIGHTS RESERVED. THIS DRAWING OR ANY PART THEREOF MUST NOT BE REPRODUCED IN ANY FORM WITHOUT THE WRITTEN PERMISSION OF AREO-POWER UNIONIZED FUELER.

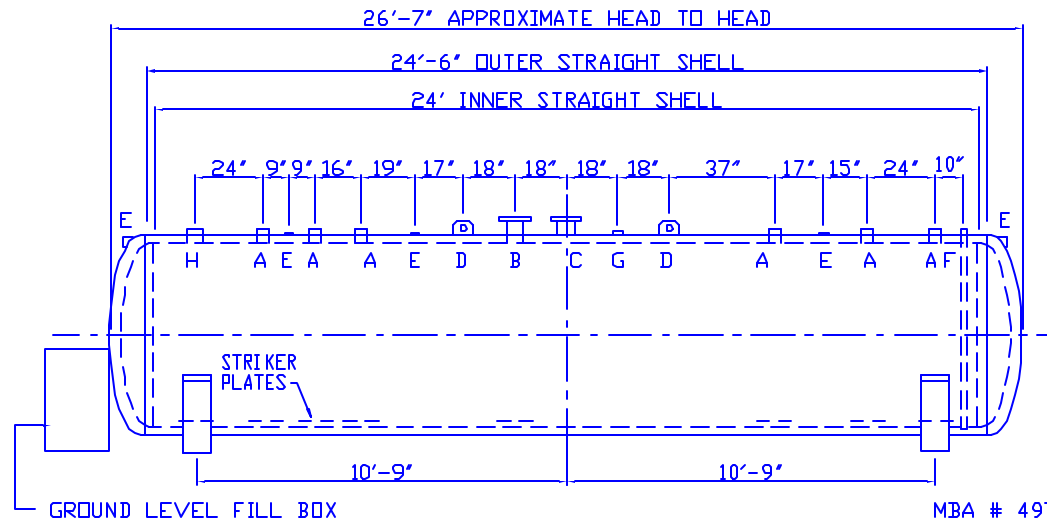
AREO-POWER SHALL BE RESPONSIBLE ONLY FOR ITEMS INDICATED ON THIS FABRICATION DRAWING UNLESS OTHERWISE NOTED. CUSTOMER IS RESPONSIBLE FOR VERIFYING CORRECTNESS OF SIZE / LOCATION OF FITTINGS, ACCESSORIES & COATINGS SHOWN ON THIS DRAWING.

3" LIGHTWEIGHT INSULATION MATERIAL WITHIN INTERSTICE



SADDLES ARE STI SPEC 6" HIGH  
 SADDLES ARE SEAL WELDED TO TANK

2" HOLE FOR SHIPMENT BANDING (2) TYP PER SADDLE



MBA # 4979

CAPACITY - 3,000 GALLONS

MATERIAL - MILD CARBON STEEL

THICKNESS - INNER SHELL - 1/4"  
 OUTER SHELL - 1/4"

HEADS - INNER - 1/4" MIN. STD FLG'D & DISHED  
 OUTER - 1/4" MIN. STD FLG'D & DISHED

CONSTRUCTION - INNER & OUTER - LAP WELD OUTSIDE ONLY

TEST - INNER - 20 PSIG HYDROTEST  
 OUTER - 5 PSIG AIR

PAINT - INT - NONE

EXT - SSPC SP6 BLAST, EPOXY PAINT SYSTEM, COLOR WHITE

LABEL - UL 2085, FIREGUARD, NYC FD & NY PART 614

A 4" FEMALE FG COUPLING

B 6" X 150# RFSD FLANGE - FOR PRIMARY TANK EMERGENCY VENT USE

C 6" X 150# RFSD FLANGE THROUGH OUTER SHELL ONLY - INTERSTICE EMERGENCY VENT USE

D LIFT LUG

E 2" FNPT THROUGH OUTER SHELL ONLY WITH CAST IRON PLUG - FOR MFG USE ONLY

F 2" MONITOR PIPE MALE NPT END

G 2" FITTING THROUGH OUTER SHELL ONLY

H 6" FEMALE FG COUPLING

STD MFG STICKER  
 ONE INCH HIGH RED LETTER STENCIL OR VINYL LABEL  
 FDNYC C of A 4979



STD AREO STICKER  
 THIS TO BE ADDED TO BOTH SIDES OF TANK

<b>AREO-POWER</b> ®				
3000 GAL 64"Ø FIREGUARD®				
NEW YORK CITY STYLE				
CUSTOMER: ---				
PROJECT: ---				
QUOTE NO: ---				
SCALE 1/4" = 1'-0"	DATE 09/13/02	DRAWN BY 001	CHK'D BY	DWG NO 3KFGNYCFD