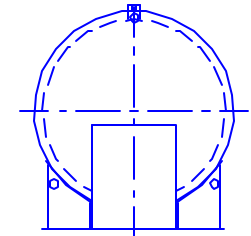
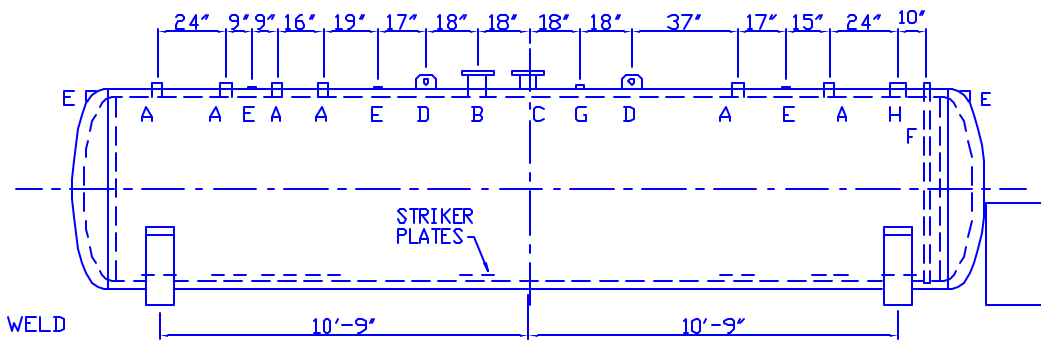
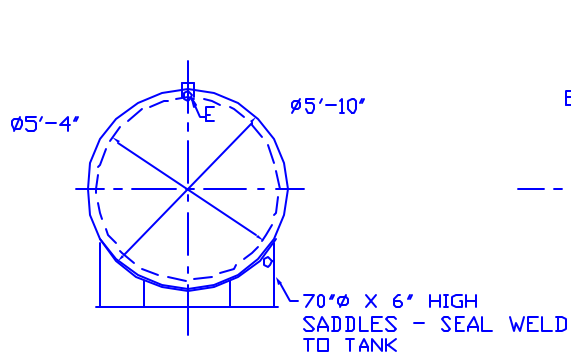


3" LIGHTWEIGHT INSULATION MATERIAL WITH AN INTERSTICE

MBA# 4979



CAPACITY - 4,000 GALLONS

MATERIAL - MILD CARBON STEEL

THICKNESS - INNER SHELL - 1/4"  
OUTER SHELL - 1/4"

HEADS - INNER - 1/4" MIN. STD FLG'D & DISHED  
OUTER - 1/4" MIN. STD FLG'D & DISHED

CONSTRUCTION - INNER & OUTER - LAP WELD OUTSIDE ONLY

TEST - INNER - 20 PSIG HYDROTEST  
OUTER - 5 PSIG AIR

PAINT - INT - NONE

EXT - SSPC SP6 BLAST, EPOXY PAINT SYSTEM, COLOR TO BE WHITE

LABEL - UL 2085, FIREGUARD, NYC FD, & NY PART 614

A 4" FEMALE FG COUPLING

B 6" X 150# RFSO FLANGE - FOR PRIMARY TANK EMERGENCY VENT USE

C 6" X 150# RFSO FLANGE THROUGH OUTER SHELL ONLY - INTERSTICE EMERGENCY VENT USE

D LIFT LUG

E 2" FNPT THROUGH OUTER SHELL ONLY WITH CAST IRON PLUG - FOR MFG USE ONLY

F 2" MONITOR PIPE MALE NPT END

G 2" FITTING THROUGH OUTER SHELL ONLY

H 6" FEMALE FG COUPLING

NOTE:  
ALL RIGHTS RESERVED. THIS DRAWING OR ANY PART THEREOF MUST NOT BE REPRODUCED IN ANY FORM WITHOUT THE WRITTEN PERMISSION OF AREO-POWER UNUTILIZED FUELER  
AREO-POWER SHALL BE RESPONSIBLE ONLY FOR ITEMS INDICATED ON THIS FABRICATION DRAWING UNLESS OTHERWISE NOTED. CUSTOMER IS RESPONSIBLE FOR VERIFYING CORRECTNESS OF SIZE / LOCATION OF FITTINGS, ACCESSORIES & COATINGS SHOWN ON THIS DRAWING

<b>AREO-POWER</b> ®				
4000 GAL 64"Ø FIREGUARD®				
NEW YORK CITY STYLE				
CUSTOMER: ---				
PROJECT: ---				
QUOTE NO: ---				
SCALE	DATE	DRAWN BY	CHK'D BY	INS NO
1/4" = 1'-0"	09/13/02	001		4K64FGNYCFD