

DRAWING TITLE

NEW YORK CITY
15,000 GAL U/G
TYPE 1 DW

GENERAL NOTES

CAPACITY : 15000 GALLONS
TYPE : 1 380 DOUBLE WALL, UNDERGROUND, NY CITY
NO. REQ. :
MATERIAL : MILD CARBON STEEL
TEST : 30 P.S.I. INNER 5 P.S.I. OUTER
MIN. GAUGE OR THICKNESS (PER U.L. 58) :
(BASED ON 60" MAX. BURIAL DEPTH)
INNER HEADS : 3/8" OUTER HEADS : 1/4"
INNER SHELL : 5/16" OUTER SHELL : 7/16"
PAINT :

INTERIOR : NONE
EXTERIOR : SP-6 BLAST, COAT WITH :
 DORROCOOTE PLUS 15 MILS
 POLYURETHANE 70 MILS
 FIBERGLASS REINFORCED POLYESTER 125 MILS

CONSTRUCTION : FLANGED & DISHED HEADS, LAP WELD
ALL EXTERIOR SEAMS ONLY

APPROVED LABELS : U.L. 58, NYC, NYCRR PART 614

S.T.I.P.3
 ACT-100-U
 ACT-100

- 15000 VOLT SPARK TEST PROVIDED AT FACTORY FOR POLYURETHANE MODELS
- 30000 VOLT SPARK TEST PROVIDED AT FACTORY FOR F.R.P. MODELS

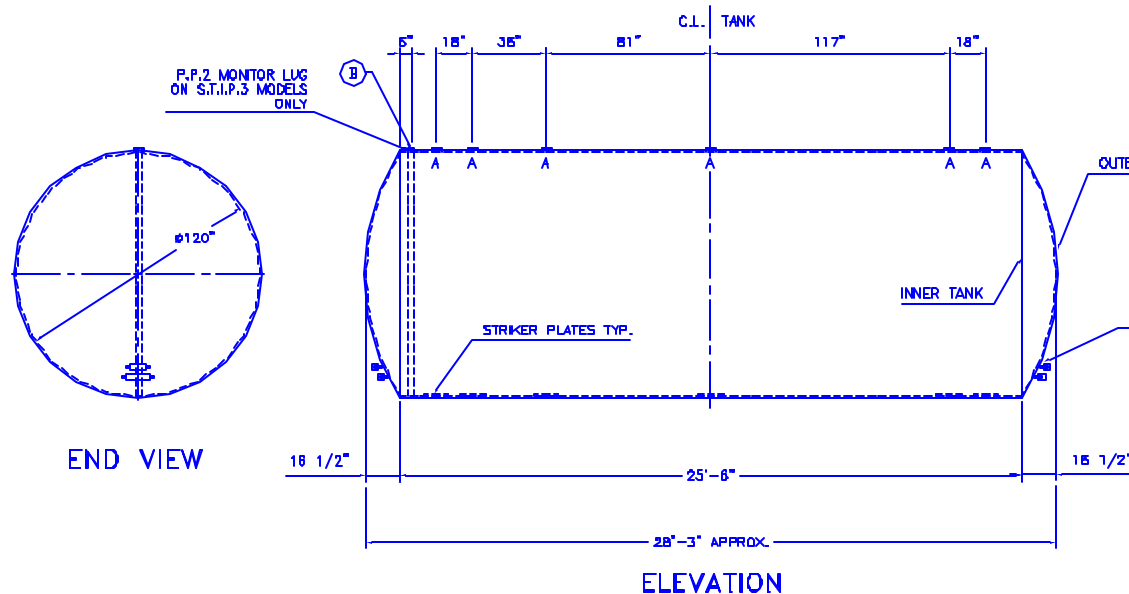
OUTER TANK

ANODES PROVIDED ON S.T.I.P.3 MODELS ONLY (1) 10 # ZINC & (1) 9 # MAG PER HEAD

FITTING SCHEDULE

A= 5" # NPT WITH 5" x 4" NYLON BUSHING
B= 3" # NPT WITH 3" x 2" NYLON BUSHING
(FITTING FOR LEAK DETECTION W/ INTERNAL PIPE)

NOTE :
ALL RIGHTS RESERVED. THIS DRAWING OR ANY PART THEREOF MUST NOT BE REPRODUCED IN ANY FORM WITHOUT THE WRITTEN PERMISSION OF HIGHLAND TANK.
HIGHLAND TANK SHALL BE RESPONSIBLE ONLY FOR ITEMS INDICATED ON THIS FABRICATION DRAWING UNLESS OTHERWISE NOTED. CUSTOMER IS RESPONSIBLE FOR VERIFYING CORRECTNESS OF SIZE / LOCATION OF FITTINGS , ACCESSORIES & COATINGS SHOWN ON THIS DRAWING



REV	DATE	BY	DESCRIPTION

ALL RIGHTS RESERVED. THIS DRAWING OR ANY PART THEREOF MUST NOT BE REPRODUCED IN ANY FORM WITHOUT WRITTEN PERMISSION OF AREO-POWER UNITIZED FUELER, INC.

DWG NO: 5K DWINYCUG120
SCALE: 3/16"=1" DWN BY: HT
SHEET: 1 DATE: 11/1/02