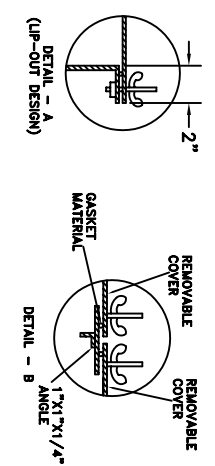
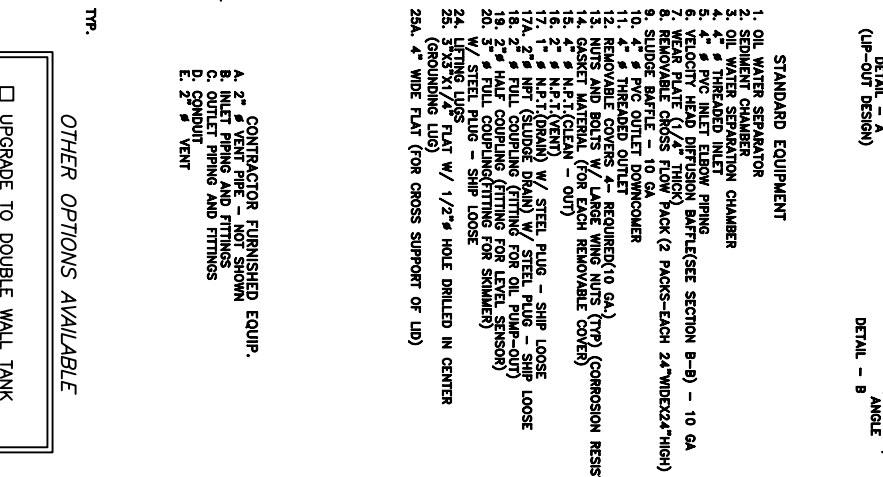
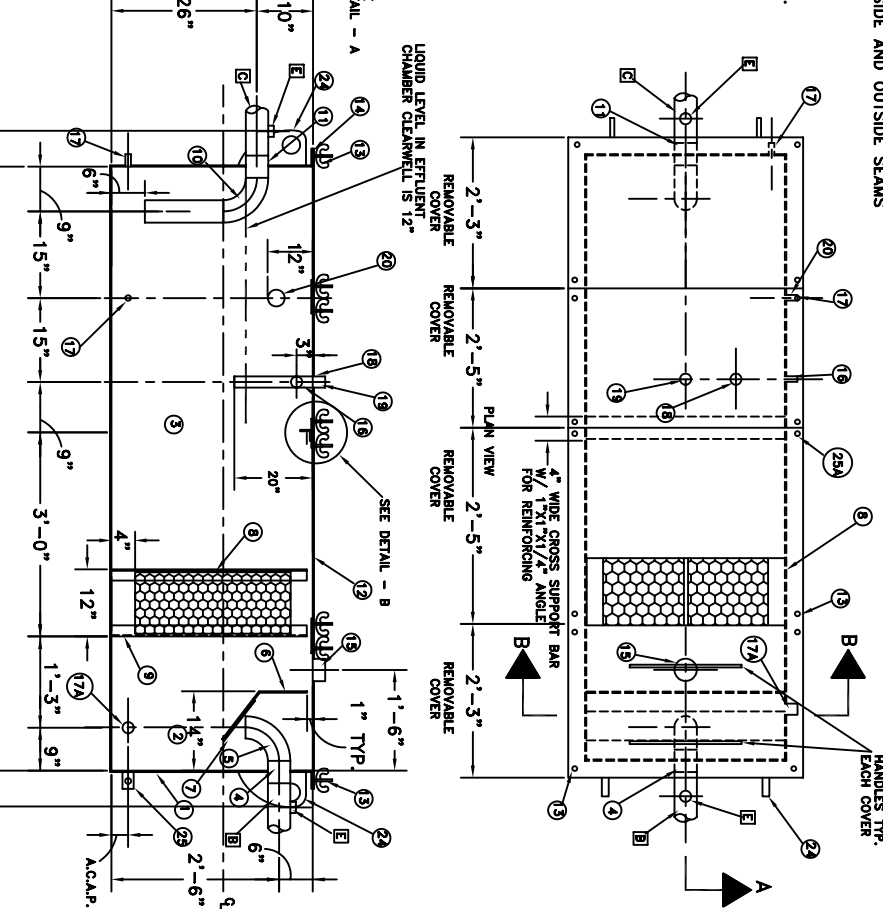
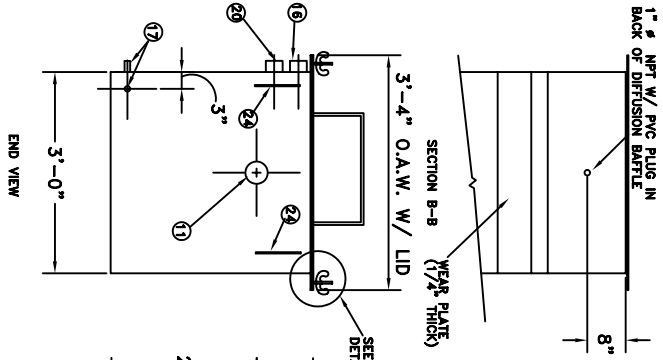


**GENERAL SPECIFICATIONS**

NO. REQ. (1)  
 MODEL: AREO-15, ABOVEGROUND 600 GALLONS O.W.S.  
 FLOW RATE: 50 GPM  
 TANK WALL THICKNESS: 7GA  
 TEST: AIR 5 PSI (AT FACTORY)  
 TANK WEIGHT: 1,900 lbs. (APPROX)  
 SURFACE PREP: S.S.P.C. NO. 6 BLAST ALL EXTERIOR SURFACES  
 S.S.P.C. NO. 10 BLAST ALL INTERNAL SURFACES  
 EXTERIOR COATING: EPOXY PRIMER & URETHANE TOPCOAT (WHITE) 3 MILS  
 INTERIOR COATING: CORROCOOTE PW (10-15 MILS)  
 CONSTRUCTION: BUTT FIT AND WELD INSIDE AND OUTSIDE SEAMS

- NOTES:
1. ALL INTERNAL MATERIAL IS 10 GA.
  2. ALL FITTINGS AND WELDS SHIP W/ STEEL PLUGS INSTALLED.
  3. LUGS PLACED APPROX. 6" DOWN FROM LID.
  4. (4) LID COVERS W/ (4) WING-NUTS.
  5. THE CENTER PARALLEL CORRUGATED FRAMEWORK W/ PLATES CAN BE REMOVED FROM THE TANK, EACH INDIVIDUAL PLATE IS REMOVABLE FROM THE FRAMEWORK.



- STANDARD EQUIPMENT**
1. OIL WATER SEPARATOR
  2. SEDIMENT CHAMBER
  3. OIL WATER SEPARATION CHAMBER
  4. 2\"/>
  - 5. PVC INLET ELBOW PIPING
  - 6. VELOCITY HEAD DIFFUSION BAFFLE(SEE SECTION B-B) - 10 GA
  - 7. WEAR PLATE (1/2\"/>
  - 8. REMOVABLE CROSS FLOW PACK (2 PACKS-EACH 24\"/>
  - 9. SLUDGE BATTLE - 10 GA
  - 10. 4\"/>
  - 11. 4\"/>
  - 12. REMOVABLE COVERS (1\"/>
  - 13. NUTS AND BOLTS W/ LARGE WING NUTS (TYP) (CORROSION RESIST.)
  - 14. GASKET MATERIAL (FOR EACH REMOVABLE COVER)
  - 15. 4\"/>
  - 16. 2\"/>
  - 17. 1\"/>
  - 18. 2\"/>
  - 19. 2\"/>
  - 20. 3\"/>
  - 21. 1\"/>
  - 22. 2\"/>
  - 23. 1\"/>
  - 24. LIFTING LUGS FLAT W/ 1/2\"/>
  - 25A. 4\"/>

- OTHER OPTIONS AVAILABLE**
- UPGRADE TO DOUBLE WALL TANK
  - 10 PPM PERFORMANCE (IN LIEU OF 15 PPM).
  - ADD SLUDGE HOPPER

CONTRACTOR TUNISHED EQUIP.

- A. 2\"/>
- B. INLET PIPING AND FITTINGS
- C. OUTLET PIPING AND FITTINGS
- D. CONDUIT
- E. 2\"/>

**AREO-POWER**  
 UNITED FUELING, INC.  
 103 SMITHTON BLVD  
 SMITHTON, NY 11787

DRAWING TITLE  
**AREO-POWER 600 GAL**  
 ABOVEGROUND SINGLE  
 WALL RECTANGULAR  
 OIL-WATER SEPARATOR

REV	DATE	BY	REVISION DESCRIPTION

CONSTRUCTION APPROVAL

PRINT NAME \_\_\_\_\_

SIGNATURE \_\_\_\_\_

DATE \_\_\_\_\_

DWG NO. **971202B**

SCALE: NTS

SHEET: 1 OF 1

DATE: 1/6/97