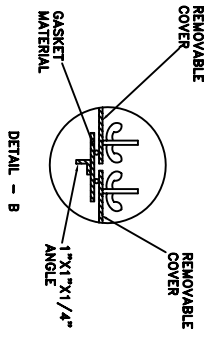
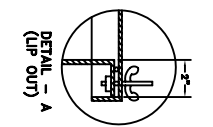


GENERAL NOTES

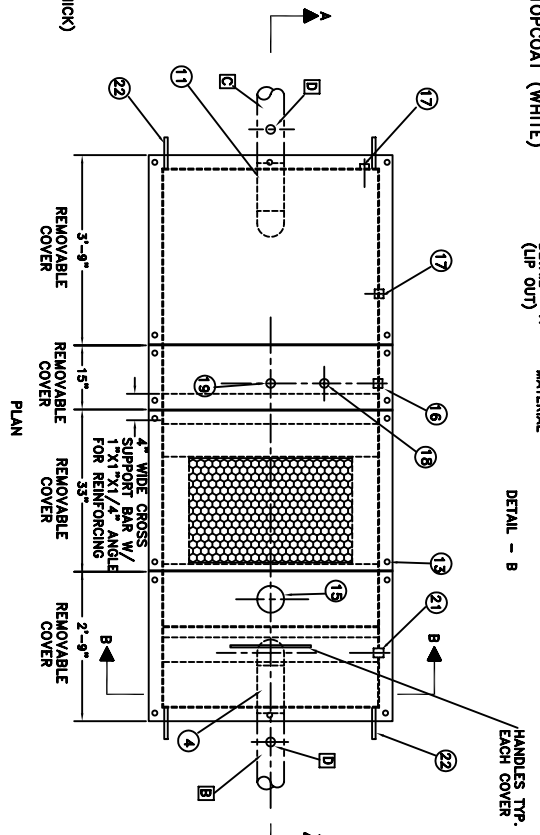
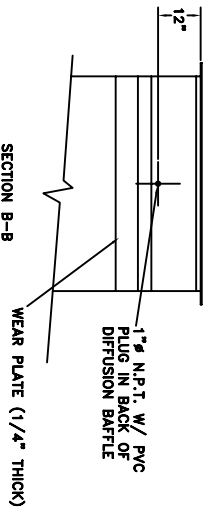
NO. REQ.: ONE
 MODEL: AREO-15 ABOVEGROUND 900 GALLONS OIL WATER SEPARATOR
 TEST: AIR 2.0 PSI
 FLOW RATE: 75 GPM
 TANK WALL THICKNESS: 7 GA
 SURFACE PREP: S.S.P.C. NO. 6 ALL EXTERIOR SURFACES AND
 S.S.P.C. NO. 10 BLAST ALL INTERIOR SURFACES
 EXTERIOR COATING: EPOXY PRIMER & URETHANE TOPCOAT (WHITE)
 THICKNESS: 3 MILS
 INTERIOR - CORROCOTE PW (10-15 MILS)
 THICKNESS - 10-15 MILS

- NOTES:
 1. ALL INTERNAL MATERIAL IS 10 GA.
 2. ALL INTERNAL MATERIAL SHIPDED W/ STEEL PLUGS
 3. LIFTING LUGS DO NOT HAVE REINFORCING PLATES.
 4. (4) LID COVERS W/ A MINIMUM FROM LID
 COVER. END COVERS HAVE (5) WING-NUTS.



STANDARD EQUIPMENT

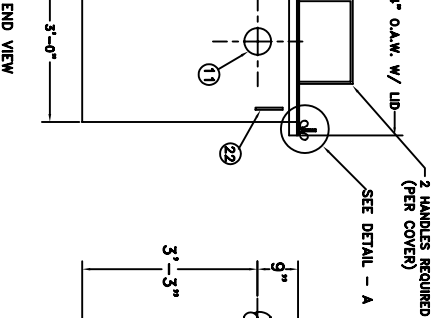
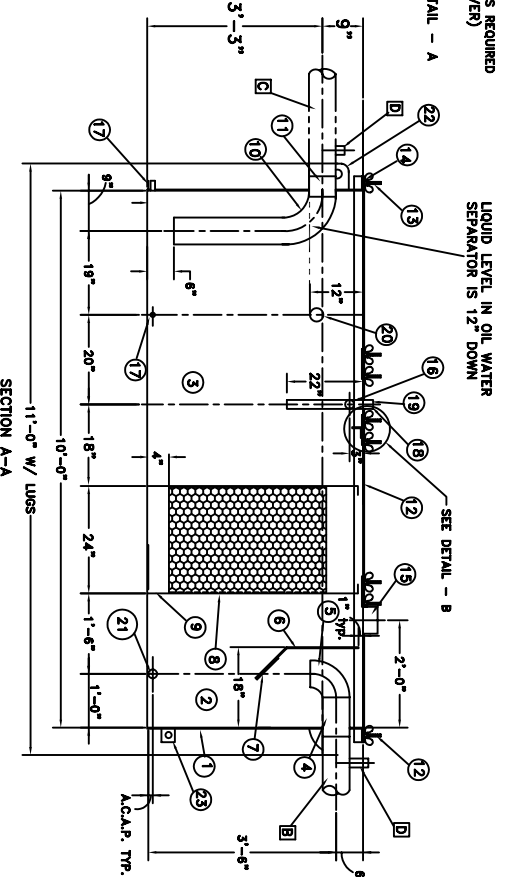
1. OIL WATER SEPARATOR
2. SEDIMENT CHAMBER
3. OIL WATER SEPARATION CHAMBER
4. 6" Ø THREADED INLET
5. 6" Ø PVC INLET ELBOW PIPING
6. VEL. HEAD DIFFUSION BATTLE (SEE SECTION B-B) - 10 GA
7. WEAR PLATE (1/4" THICK)
8. REMOVABLE CROSS-FLOW PACK (2 PACKS REQUIRED)
9. REMOVABLE PVC OILET DOWN CORNER PIPE
10. 6" Ø THREADED OUTLET
11. REMOVABLE COVERS (4-REQUIRED (10 GA) (TYP.))
12. REMOVABLE COVERS (4-REQUIRED (10 GA) (TYP.))
13. NUTS & BOLTS W/ LARGE WING NUTS (CORROSION RESISTANT)
14. GASKET MATERIAL (FOR EACH REMOVABLE COVER)
15. 6" Ø N.P.T. (CLEAN OUT)
16. 2" Ø N.P.T. (VENT)
17. 1" Ø NPT (DRAIN) W/ STEEL PLUG
18. 2" Ø FULL COUPLING (FITTING FOR OIL PUMP-OUT)
19. 2" Ø PVC PUMP OUT PIPE
20. 3" Ø HALF COUPLING (FITTING FOR LEVEL SENSOR)
21. 2" Ø FULL COUPLING (FITTING FOR OIL SKIMMER)
22. W/ STEEL PLUG
23. LIFTING LUGS W/-OUT REINFORCING PLATE
24. 3/8" X 1/4" FLAT W/ 1/2" HOLE DRILLED IN CENTER (GROUNDING LUG)



CONTRACTOR FURNISHED EQUIP.
 A. 2" Ø VENT PIPING - NOT SHOWN
 B. INLET PIPING AND FITTINGS
 C. OUTLET PIPING AND FITTINGS
 D. 2" Ø TEE (VENT)

OTHER OPTIONS AVAILABLE

- UPGRADE TO DOUBLE WALL TANK
- 10 PPM PERFORMANCE (IN LIEU OF 15 PPM).
- ADD SLUDGE HOPPER



AREO-POWER
 UNITED FUELER, INC.
 103 SMITHTON BLVD
 SMITHTON, NY 11787

DRAWING TITLE
AREO-POWER 900 GAL
 ABOVEGROUND SINGLE
 WALL RECTANGULAR
 OIL-WATER SEPARATOR

REV	DATE	BY	REVISION DESCRIPTION

CONSTRUCTION APPROVAL

PRINT NAME _____
 SIGNATURE _____
 DATE _____

DWG NO: **971211B**
 SCALE: NTS
 SHEET: 1 OF 1
 DATE: 1/6/97

ALL RIGHTS RESERVED. THIS DRAWING IS THE PROPERTY OF UNITED FUELER, INC. REPRODUCED IN ANY FORM WITHOUT WRITTEN PERMISSION OF AREO-POWER UNITED FUELER, INC.