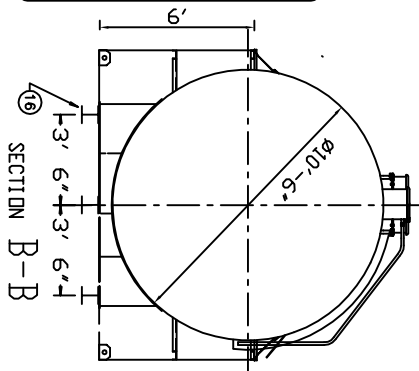


ITEM	DESCRIPTION	ITEM	DESCRIPTION
①	4" NORMAL VENT FITTING	⑪	DRIP PAN PLATFORM WITH 2" UP
②	10" FLGD -8 OZ. EMERGENCY VENT	⑫	1/2" DRAIN FITTING
③	VENT DEFLECTOR ASSEMBLY - SHIPPED LOOSE	⑬	STAIRS, PLATFORM AND HANDRAIL-SHIPPED LOOSE
④	4" FITTING	⑭	3/4" PUMP-OUT PIPE
⑤	3" FITTING	⑮	3" PIPE CAP SLUMP
⑥	3" FCPUG	⑯	8" WF (3)
⑦	1" OVERFLOW PIPE - SHIPPED LOOSE	⑰	10" X 150# RFSO FLANGE
⑧	1" PIPE UNION	⑱	24" X 1/4" PLATE MANWAY
⑨	4" FILL FITTING		
⑩	FILL CONTAINMENT CHAMBER (NEW 7 GAL MODEL)		

NOTES

1. PRIMARY TANK: SHELL - 1/4" HEAD - 5/16" CONTAINMENT: 1/4"
2. MATERIAL - MILD CARBON STEEL
3. TEST AT 5-7 PSIG.
4. ENTIRE UNIT UL LISTED.
5. EXTERIOR FINISH - RED PRIMER
6. INTERIOR LINING - NONE
7. ALL DIMENSIONS APPROXIMATE.



All rights reserved. This drawing or any part thereof must not be reproduced in any form without the written permission of Aero-Power Unitized Fueler, Inc.

AERO-POWER

TITLE	REV #	REV DATE
30,000 GAL AERO-FUELER		
U.S. PATENT # 4895272	CANADIAN PATENT APPLIED FOR	DWG. NO.
SCALE 3/16"=1'	DATE 08/06/01	DRAWN BY 001
		AF 30000