

ITEM	DESCRIPTION
①	2" NORMAL VENT FITTING
②	4"-8 OZ. EMERGENCY VENT - SHIPPED LOOSE
③	VENT DEFLECTOR ASSEMBLY - SHIPPED LOOSE
④	2" FCPLG
⑤	1" OVERFLOW PIPE - SHIPPED LOOSE
⑥	1" PIPE UNION
⑦	3" FILL FITTING
⑧	FILL CONTAINMENT CHAMBER
⑨	DRIP PAN PLATFORM WITH 2" LIP
⑩	1/2" DRAIN FITTING
⑪	STAIRS, PLATFORM AND HANDRAIL - SHIPPED LOOSE
⑫	3/4" PUMPOUT PIPE
⑬	3" PIPE CAP SUMP
⑭	4" X 5.4# CH

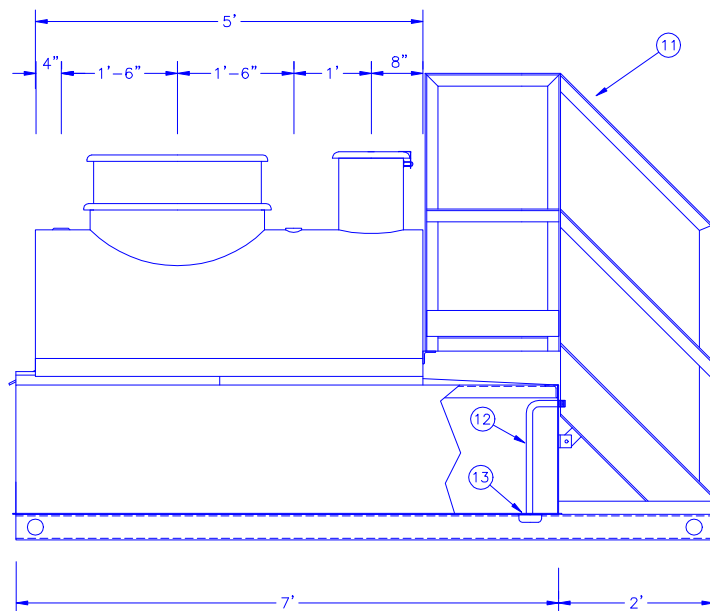
AUTHORIZATION

COMPANY NAME \_\_\_\_\_

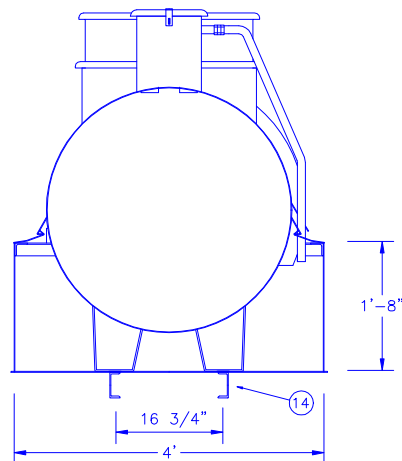
APPROVED BY (PLEASE PRINT) \_\_\_\_\_

APPROVAL SIGNATURE \_\_\_\_\_

DATE \_\_\_\_\_ CONTRACT NO. \_\_\_\_\_



SECTION A-A



NOTES

- PRIMARY TANK:  
SHELL - 12GA. HEAD - 12 GA.  
CONTAINMENT: 10 GA.
- MATERIAL - MILD CARBON STEEL
- TEST AT 5-7 PSIG.
- ENTIRE UNIT UL LISTED.
- EXTERIOR FINISH -
- INTERIOR LINING -
- ALL DIMENSIONS APPROXIMATE.

All rights reserved. This drawing or any part thereof must not be reproduced in any form without the written permission of Areo-Power Utilized Fueler, Inc.

**AREO-POWER®**

TITLE	300 GAL. AREO FUELER	REV #	REV DATE
U.S. PATENT # 4895272	CANADIAN PATENT APPLIED FOR		
SCALE	DATE	DRAWN BY	DWG. NO.
1"=20"	8/1/92	JF	APB570