

ITEM	DESCRIPTION
①	2" NORMAL VENT FITTING
②	6"-8 OZ. EMERGENCY VENT - SHIPPED LOOSE
③	VENT DEFLECTOR ASSEMBLY - SHIPPED LOOSE
④	3" FITTING
⑤	2" FCPLG
⑥	2" FITTING
⑦	1" OVERFLOW PIPE - SHIPPED LOOSE
⑧	1" PIPE UNION
⑨	3" FILL FITTING
⑩	FILL CONTAINMENT CHAMBER
⑪	DRIP PAN PLATFORM WITH 2" LIP
⑫	1/2" DRAIN FITTING
⑬	STAIRS, PLATFORM AND HANDRAIL-SHIPPED LOOSE
⑭	3/4" PUMPOUT PIPE
⑮	3" PIPE CAP SUMP
⑯	4" X 5.4# CH

AUTHORIZATION

COMPANY NAME _____

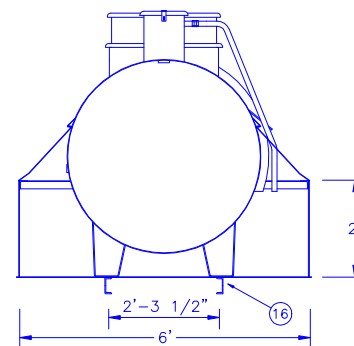
APPROVED BY (PLEASE PRINT) _____

APPROVAL SIGNATURE _____

DATE _____

CONTRACT NO. _____

SECTION A-A



NOTES

- PRIMARY TANK:
SHELL - 7 GA. HEAD - 7 GA
CONTAINMENT: 7 GA.
- MATERIAL - MILD CARBON STEEL
- TEST AT 5-7 PSIG.
- ENTIRE UNIT UL LISTED.
- EXTERIOR FINISH -
- INTERIOR LINING -
- ALL DIMENSIONS APPROXIMATE.

All rights reserved. This drawing or any part thereof must not be reproduced in any form without the written permission of Areo-Power Unitized Fueler, Inc.

AREO-POWER®

TITLE	REV #	REV DATE
1000 GAL. AREO FUELER		
U.S. PATENT # 4895272	CANADIAN PATENT APPLIED FOR	
SCALE 3/8"=1'	DATE 8/1/92	DWG. NO. APB590