

ITEM	DESCRIPTION
①	3" NORMAL VENT FITTING
②	8"-8 OZ. EMERGENCY VENT - SHIP LOOSE
③	VENT DEFLECTOR ASSEMBLY
④	4" FITTING
⑤	3" FITTING
⑥	3" FCPLG
⑦	1" OVERFLOW PIPE
⑧	1" PIPE UNION
⑨	4" FILL FITTING
⑩	FILL CONTAINMENT CHAMBER
⑪	DRIP PAN PLATFORM WITH 2" LIP
⑫	1/2" DRAIN FITTING
⑬	STAIRS, PLATFORM AND HANDRAIL
⑭	3/4" PUMPOUT PIPE
⑮	3" PIPE CAP SUMP
⑯	6" WF (3)

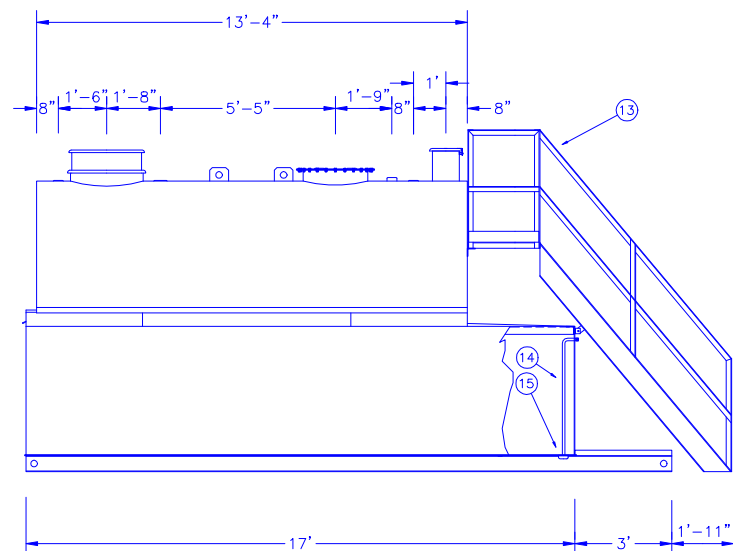
AUTHORIZATION

COMPANY NAME \_\_\_\_\_

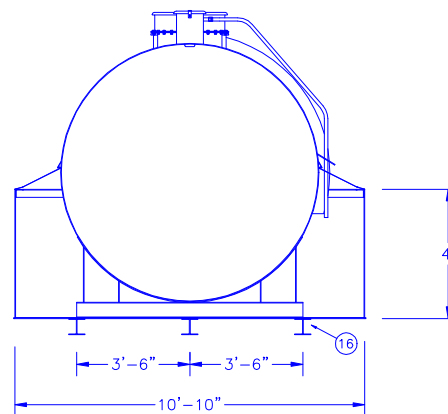
APPROVED BY (PLEASE PRINT) \_\_\_\_\_

APPROVAL SIGNATURE \_\_\_\_\_

DATE \_\_\_\_\_ CONTRACT NO. \_\_\_\_\_



SECTION A-A



NOTES

- PRIMARY TANK:  
SHELL - 1/4" HEAD - 5/16"  
CONTAINMENT: 1/4"
- MATERIAL - MILD CARBON STEEL
- TEST AT 5-7 PSIG.
- ENTIRE UNIT UL LISTED.
- EXTERIOR FINISH -
- INTERIOR LINING -
- ALL DIMENSIONS APPROXIMATE.

All rights reserved. This drawing or any part thereof must not be reproduced in any form without the written permission of Areo-Power Utilized Fueler, Inc.

**AREO-POWER®**

TITLE	REV #	REV DATE
5000 GAL. AREO FUELER		
U.S. PATENT # 4895272	CANADIAN PATENT APPLIED FOR	
SCALE	DATE	DRAWN BY
1/4"=1'	8/1/92	JF
		DWG. NO.
		APB650