

ITEM	DESCRIPTION
①	4" NORMAL VENT FITTING
②	8"-8 OZ. EMERGENCY VENT - SHIPPED LOOSE
③	VENT DEFLECTOR ASSEMBLY - SHIPPED LOOSE
④	4" FITTING
⑤	3" FITTING
⑥	3" FCPLG
⑦	1" OVERFLOW PIPE - SHIPPED LOOSE
⑧	1" PIPE UNION
⑨	4" FILL FITTING
⑩	FILL CONTAINMENT CHAMBER
⑪	DRIP PAN PLATFORM WITH 2" LIP
⑫	1/2" DRAIN FITTING
⑬	STAIRS, PLATFORM AND HANDRAIL-SHIPPED LOOSE
⑭	3/4" PUMPOUT PIPE
⑮	3" PIPE CAP SUMP
⑯	8" WF (3)

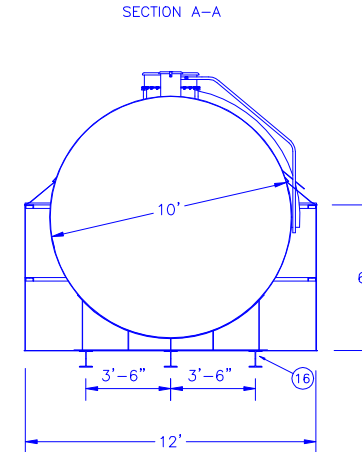
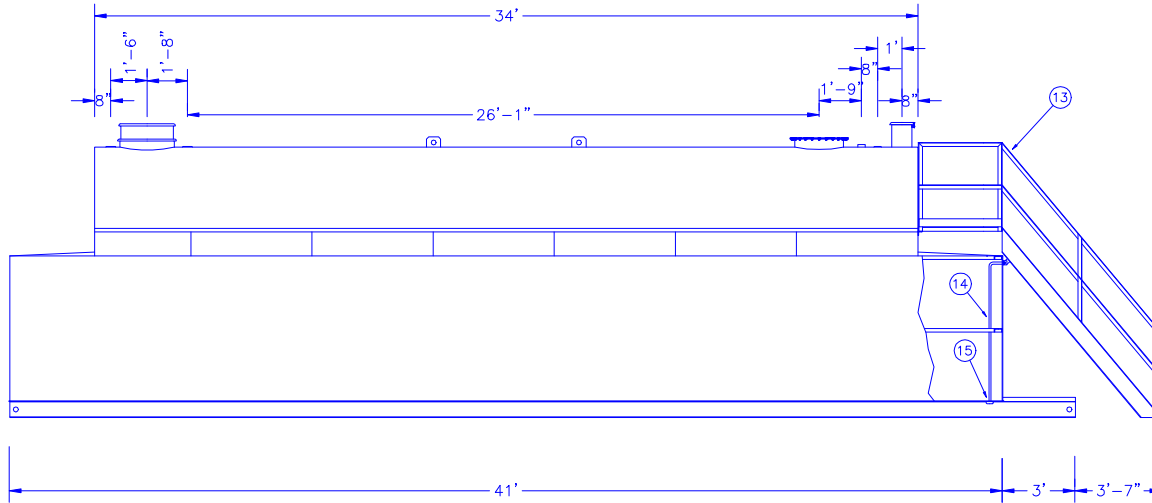
AUTHORIZATION _____

COMPANY NAME _____

APPROVED BY (PLEASE PRINT) _____

APPROVAL SIGNATURE _____

DATE _____ CONTRACT NO. _____



- NOTES
1. PRIMARY TANK:
SHELL - 1/4" HEAD - 5/16"
CONTAINMENT: 1/4"
 2. MATERIAL - MILD CARBON STEEL
 3. TEST AT 5-7 PSIG.
 4. ENTIRE UNIT UL LISTED.
 5. EXTERIOR FINISH -
 6. INTERIOR LINING -
 7. ALL DIMENSIONS APPROXIMATE.

All rights reserved. This drawing or any part thereof must not be reproduced in any form without the written permission of Areo-Power Unitized Fueler, Inc.

AREO-POWER®			
TITLE		REV #	REV DATE
20,000 GAL. AREO FUELER			
U.S. PATENT # 4895272		CANADIAN PATENT APPLIED FOR	
SCALE	DATE	DRAWN BY	DWG. NO.
3/16"=1'	8/1/92	JF	APB710