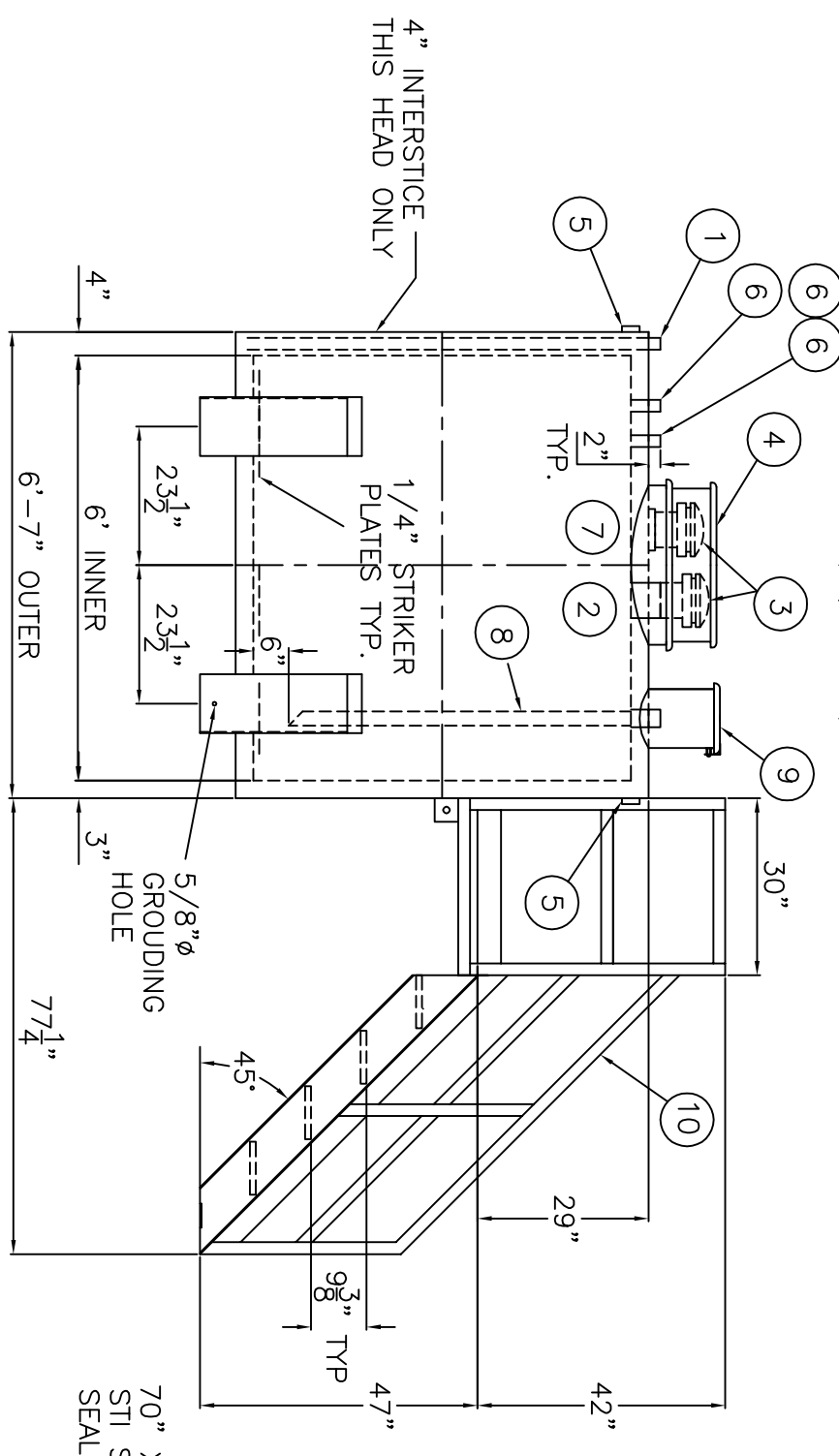
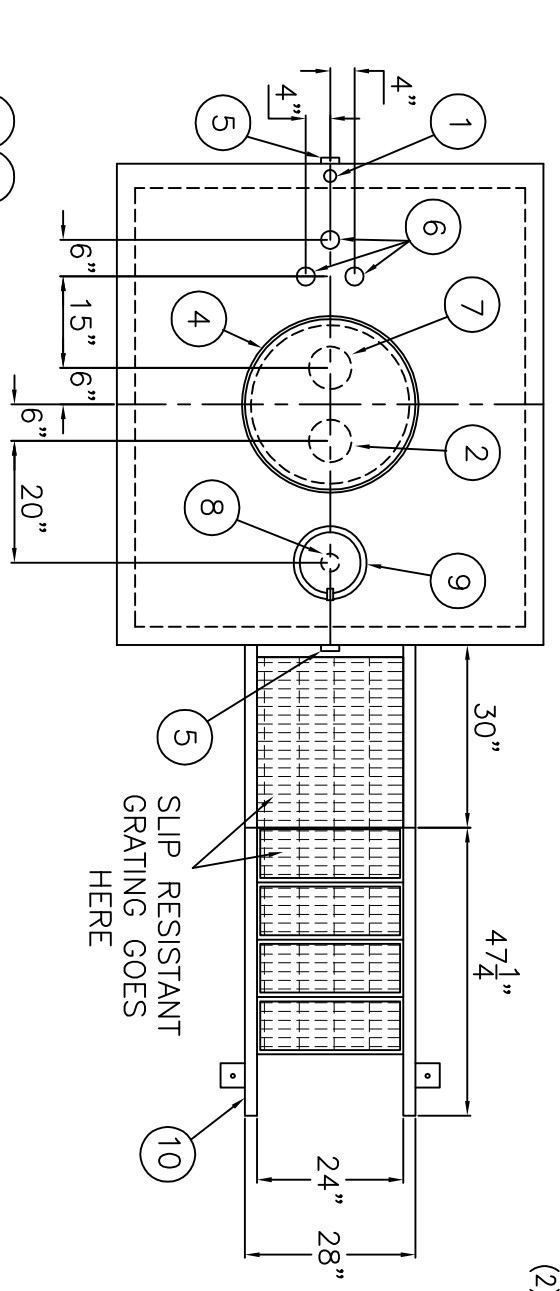


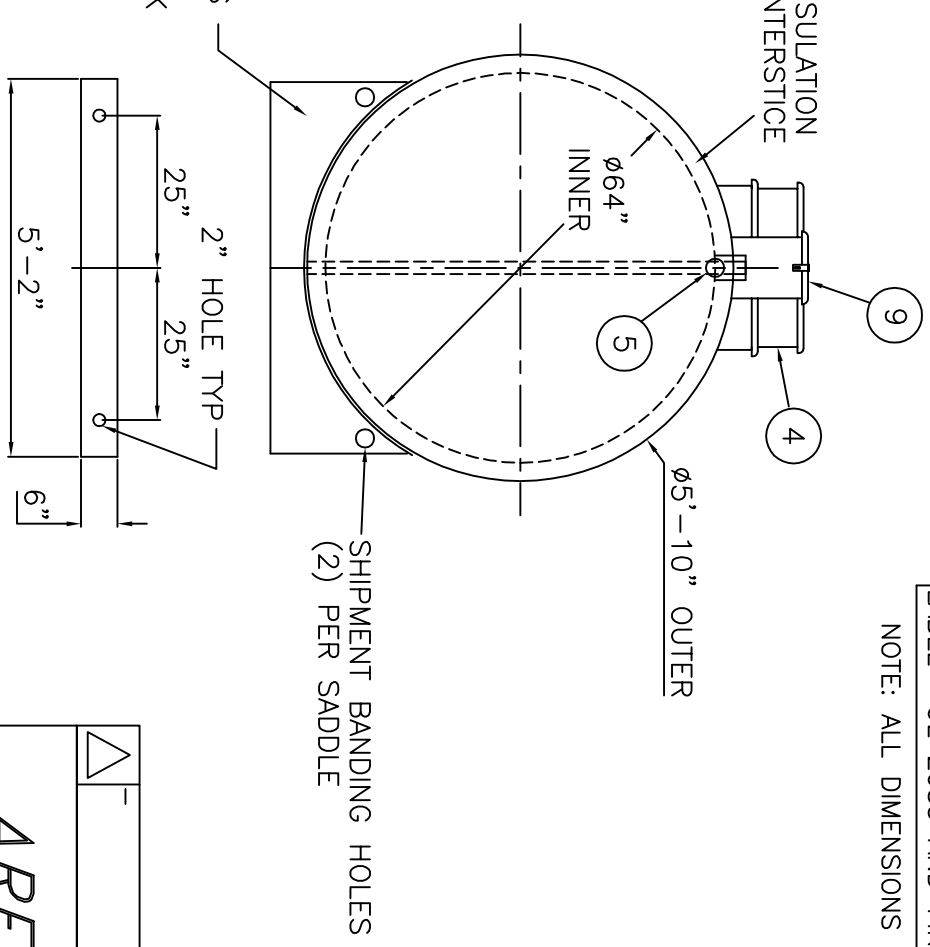
SHIP LOOSE

(2) 6" MALE THREADED EMERGENCY VENTS



3" LIGHTWEIGHT INSULATION MATERIAL WITHIN INTERSTICE

70" X 6" HIGH SADDLES STI SPECIFICATION SEAL WELD (2) TO TANK



NOTE: ALL RIGHTS RESERVED. THIS DRAWING MUST NOT BE REPRODUCED IN ANY FORM WITHOUT THE WRITTEN PERMISSION OF AREO-POWER®. AREO-POWER® SHALL BE RESPONSIBLE ONLY FOR ITEMS INDICATED ON THIS FABRICATION DRAWING UNLESS OTHERWISE NOTED. CUSTOMER IS RESPONSIBLE FOR VERIFYING CORRECTNESS OF SIZE AND LOCATION OF FITTINGS, ACCESSORIES, AND COATINGS SHOWN ON THIS DRAWING.

TOUCH UP OF FINISHED PAINT IS REQUIRED BY INSTALLATION CONTRACTOR. TOUCH UP PAINT SHIPPED WITH TANK.

DESIGN DATA	
CAPACITY :	1,000 GALLONS
TYPE:	FIREGUARD® CYLINDRICAL
FIREGUARD® IS A TRADEMARK OF WITH THE STEEL TANK INSTITUTE	
NO. REQ. --	--
OPERATING PRESSURE --	ATMOSPHERIC
TANK MATERIAL --	MILD CARBON STEEL
THICKNESS -- INNER -- HEADS AND SHELL --	7 GAUGE
THICKNESS -- OUTER -- HEADS AND SHELL --	7 GAUGE
MIN. GAUGE OR THICKNESS (PER U.L. 2085)	
CONSTRUCTION -- INNER --	LAP WELD OUTSIDE ONLY
CONSTRUCTION -- OUTER --	LAP WELD OUTSIDE ONLY
TANK TEST --	PER UL 2085
INT. FINISH --	NONE
EXT. FINISH --	SP-6 BLAST, FINISH PAINT WHITE
LABEL --	UL 2085 AND FIREGUARD® PER stl
NOTE: ALL DIMENSIONS APPROXIMATE	

ITEM	QTY	DESCRIPTION	ITEM	QTY	DESCRIPTION
1	1	2" INTERSTITIAL MONITOR PIPE - MALE NPT END	7	1	6" FITTING THROUGH OUTER SHELL ONLY, MARK WITH SPECIAL WARNING LABEL INTERSTITIAL EMERGENCY VENT USE ONLY
2	1	6" FEMALE FIREGUARD COUPLING - FOR PRIMARY EMERGENCY VENT USE	8	1	2" FEMALE FIREGUARD COUPLING w/ 2" DROP PIPE TO WITHIN 6" OF THE BOTTOM OF THE TANK WITH 45° MITER
3	2	6" EMERGENCY VENT			
4	1	VENT DEFLECTOR ASSEMBLY			
5	2	2" FITTING THROUGH OUTER SHELL ONLY WITH CAST IRON PLUG- MFG USE ONLY	9	1	FILL CONTAINMENT CHAMBER
6	3	2" FEMALE FIREGUARD COUPLING	10	1	STAIRS, PLATFORM AND HAND RAILS

U.S. PATENT # 4895272 CANADIAN PATENT APPLIED FOR

AREO-POWER®

1,000 GAL 64" Ø CYL. FIREGUARD®

PATENT: 5,695,089 PATENT: 5,809,650

CUSTOMER:

PROJECT:

QUOTE NO:

SCALE: DATE: DWG. BY: Dwg. No: 3/8" = 12" AP1000FG64CYL

CHK'D BY: