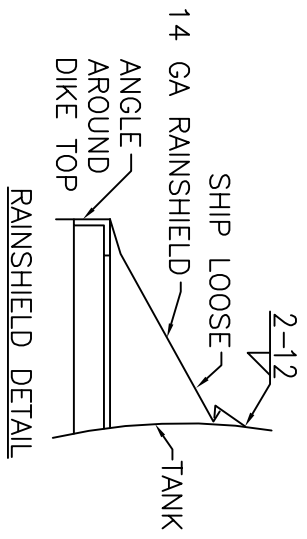
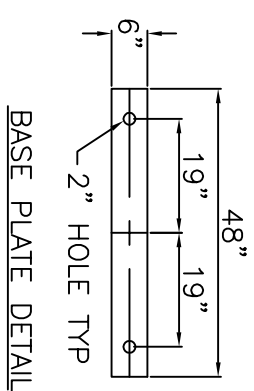
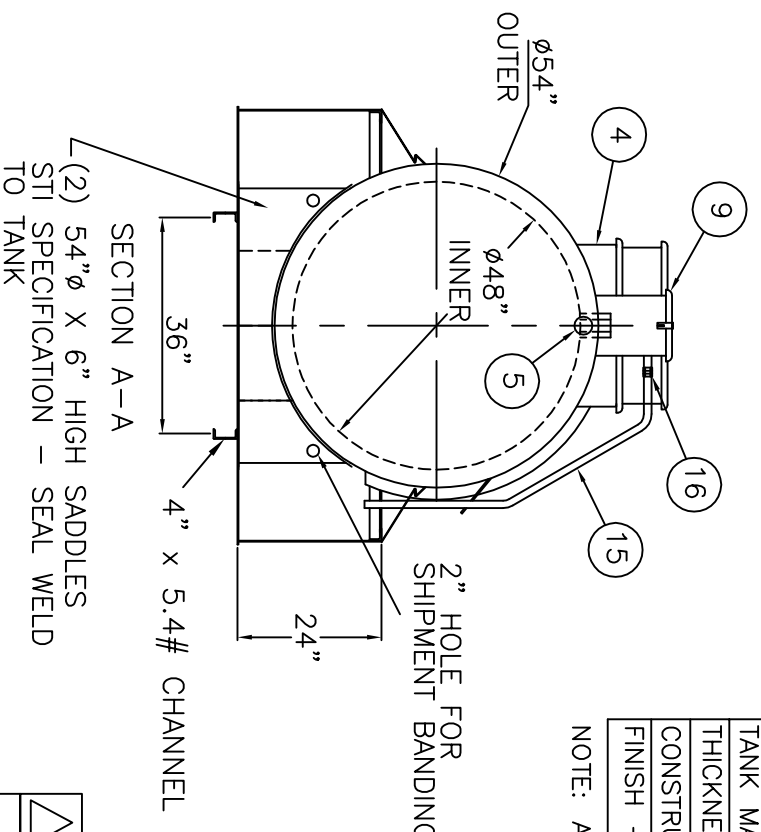
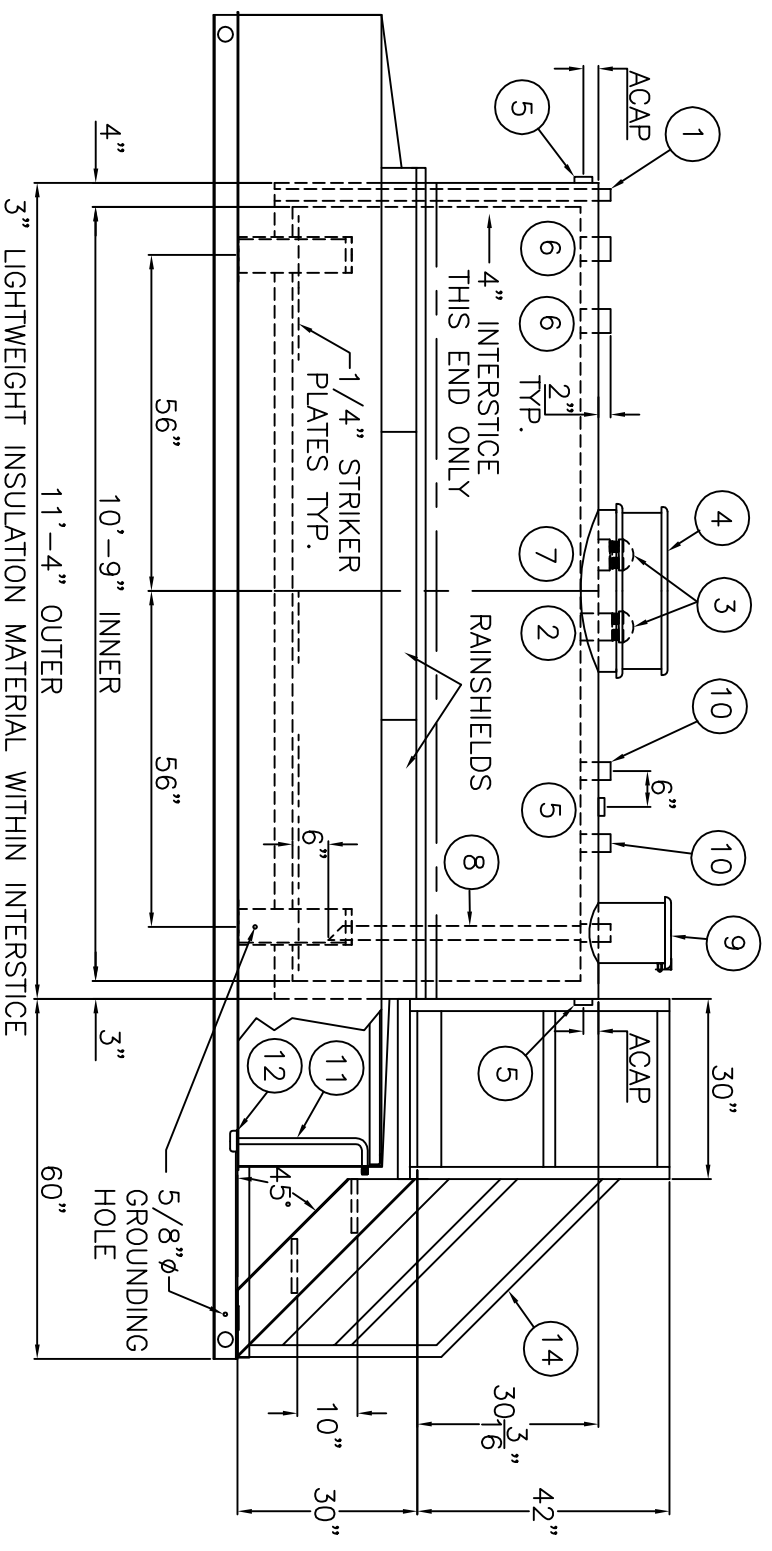


SLIP RESISTANT FIBERGLASS GRATE GOES HERE



NOTE: ALL RIGHTS RESERVED. THIS DRAWING MUST NOT BE REPRODUCED IN ANY FORM WITHOUT THE WRITTEN PERMISSION OF AREO-POWER®. AREO-POWER® SHALL BE RESPONSIBLE ONLY FOR ITEMS INDICATED ON THIS FABRICATION DRAWING UNLESS OTHERWISE NOTED. CUSTOMER IS RESPONSIBLE FOR VERIFYING CORRECTNESS OF SIZE AND LOCATION OF FITTINGS, ACCESSORIES, AND COATINGS SHOWN ON THIS DRAWING. TOUCH UP OF FINISHED PAINT IS REQUIRED BY INSTALLATION CONTRACTOR. TOUCH UP PAINT SHIPPED WITH TANK.



DESIGN DATA	
CAPACITY :	1000 GALLONS
TYPE:	FIREGUARD® CYLINDRICAL
FIREGUARD® IS A TRADEMARK OF WITH THE STEEL TANK INSTITUTE	
NO. REQ. --	--
OPERATING PRESSURE --	ATMOSPHERIC
TANK MATERIAL --	MILD CARBON STEEL
THICKNESS -- INNER --	7 GAUGE
THICKNESS -- OUTER --	7 GAUGE
MIN. GAUGE OR THICKNESS (PER U.L. 2085)	
CONSTRUCTION -- INNER --	LAP WELD OUTSIDE ONLY
CONSTRUCTION -- OUTER --	LAP WELD OUTSIDE ONLY
TANK TEST --	PER UL 2085
INT. FINISH --	NONE
EXT. FINISH --	SP-6 BLAST, FINISH PAINT WHITE
LABEL --	UL 2085 AND FIREGUARD® PER sti
DIKE DESIGN DATA	
CAPACITY --	1,436 GALLONS
TANK MATERIAL --	MILD CARBON STEEL
THICKNESS --	ALL -- 7 GAUGE
CONSTRUCTION --	WELED INSIDE & OUTSIDE
FINISH --	ALL -- SAME AS TANK EXTERIOR

NOTE: ALL DIMENSIONS APPROXIMATE

- SHIP LOOSE
- (2) 6" MALE THREADED EMERGENCY VENTS
- (1) VENT DEFLECTOR

ITEM	QTY	DESCRIPTION	ITEM	QTY	DESCRIPTION	ITEM	QTY	DESCRIPTION	ITEM	QTY	DESCRIPTION
1	1	2" INTERSTITIAL MONITOR PIPE - MALE NPT END	7	1	6" FITTING THROUGH OUTER SHELL ONLY, MARK WITH SPECIAL WARNING LABEL INTERSTITIAL EMERGENCY VENT USE ONLY	12	1	3" PIPE CAP SUMP	16	1	1" PIPE UNION
2	1	6" FEMALE FIREGUARD COUPLING - FOR PRIMARY EMERGENCY VENT USE	8	1	2" FEMALE FIREGUARD COUPLING w/ 2" DROP PIPE TO WITHIN 6" OF THE BOTTOM OF THE TANK WITH 45° MITER	13	1	1/2" DRAIN FITTING	15	1	1" OVER FLOW PIPE
3	2	6" EMERGENCY VENT (SHIP LOOSE)	9	1	FILL CONTAINMENT CHAMBER	14	1	24" WIDE x 30" HIGH BOLT TO TANK STAIRS & 24" WIDE x 30" LONG PLATFORM w/ 1" FIBERGLASS GRATING, SHIP LOOSE, INSTALLATION ON SITE BY OTHERS.			
4	1	VENT DEFLECTOR ASSEMBLY	10	2	2" FEMALE FIREGUARD COUPLING						
5	3	2" FITTING THROUGH OUTER SHELL ONLY WITH CAST IRON PLUG - MFG USE ONLY	11	1	3/4" PUMPOUT PIPE						
6	2	4" FEMALE FIREGUARD COUPLING									

**AREO-POWER®**

U.S. PATENT # 4895272    CANADIAN PATENT APPLIED FOR

**1000 GALLON 48" Ø CYL. FIREGUARD®**

PATENT: 5,695,089    PATENT: 5,809,650

CUSTOMER:

PROJECT:

QUOTE NO:

SCALE: 3/8" = 12"

DATE:

DWG. BY:    DWG. NR.:    AP1000FG48DIKE