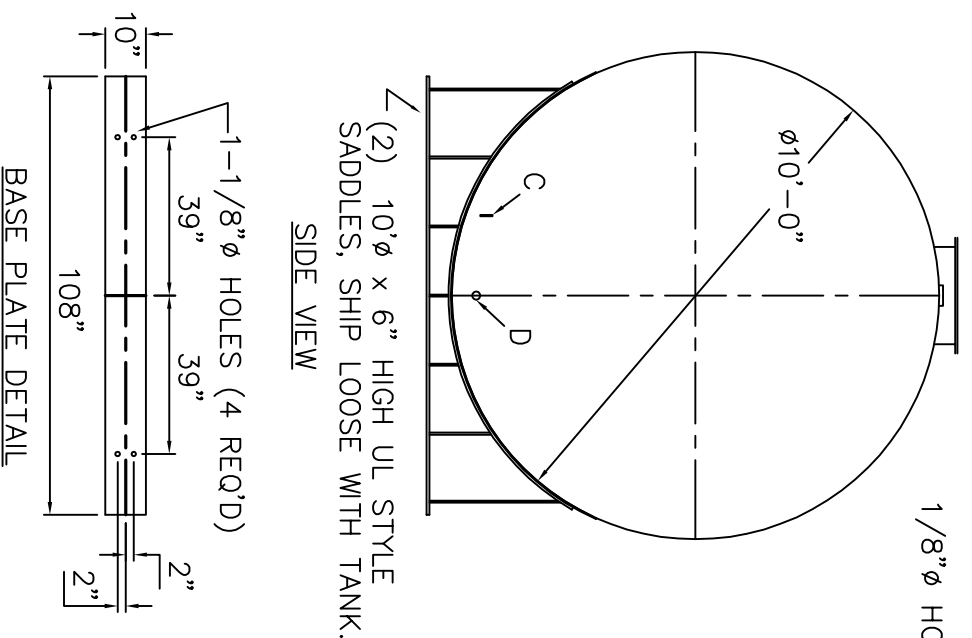


NOTE: ALL RIGHTS RESERVED. THIS DRAWING MUST NOT BE REPRODUCED IN ANY FORM WITHOUT THE WRITTEN PERMISSION OF AREO-POWER®. AREO-POWER® SHALL BE RESPONSIBLE ONLY FOR ITEMS INDICATED ON THIS FABRICATION DRAWING UNLESS OTHERWISE NOTED. CUSTOMER IS RESPONSIBLE FOR VERIFYING CORRECTNESS OF SIZE AND LOCATION OF FITTINGS, ACCESSORIES, AND COATINGS SHOWN ON THIS DRAWING.

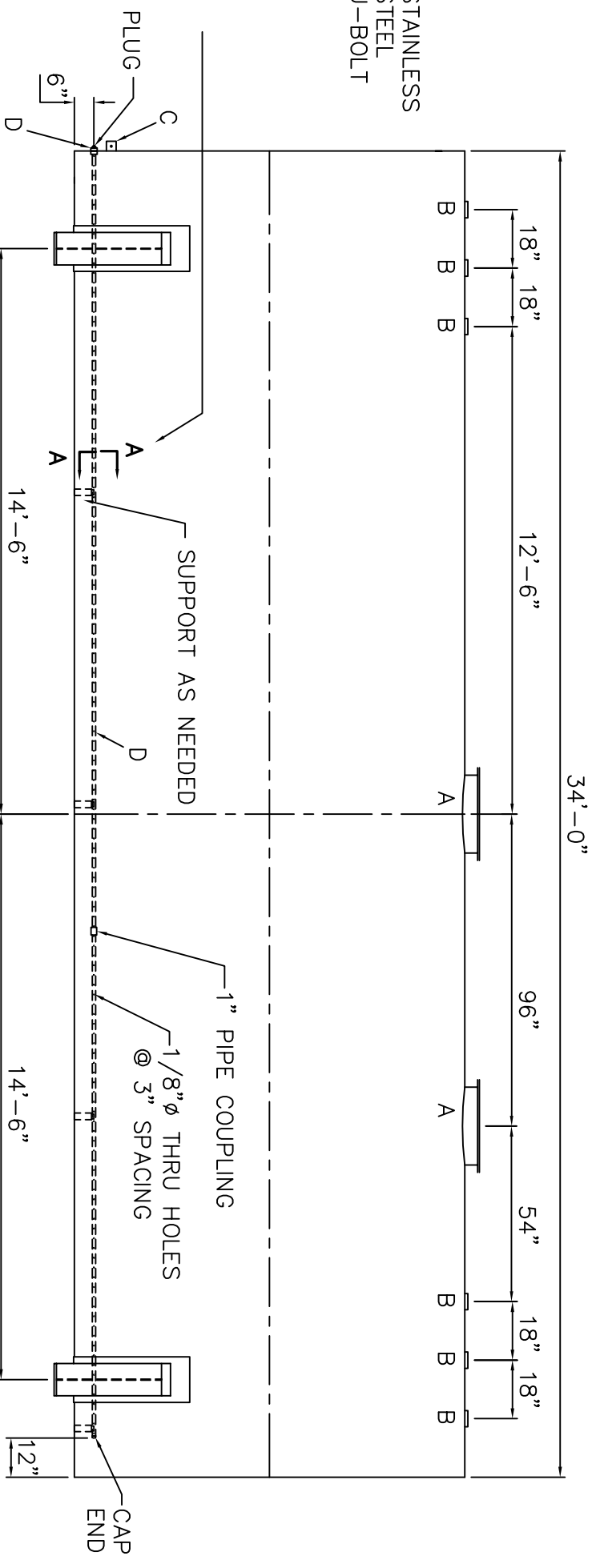
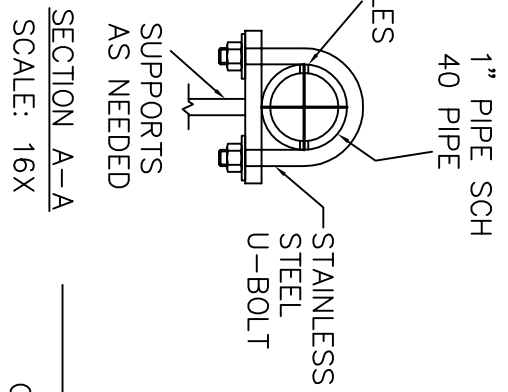
TOUCH UP OF FINISHED PAINT IS REQUIRED BY INSTALLATION CONTRACTOR. TOUCH UP PAINT SHIPPED WITH TANK.

SHIPPING LUGS AS NEEDED



DESIGN DATA

CAPACITY	-20,000 GALLONS
TYPE	- SINGLE WALL
NO. REQ.	- -
OPERATING PRESSURE	-ATMOSPHERIC
SPECIFIC GRAVITY	= 1.0
TANK MATERIAL	- MILD CARBON STEEL
THICKNESS - HEADS:	5/16"
THICKNESS - SHELL:	1/4"
CONSTRUCTION	- LAP WELD INSIDE & OUTSIDE
TANK TEST	-5 PSIG
INT. FINISH	- SP10 BLAST, CHEM LINER 4000 EPOXY
EXT. FINISH	-SHOP PRIMER OR OPTIONAL WHITE PAINT
LABEL	- NONE



LEGEND

A	24" $\phi$ TIGHT BOLT MANWAY w/ 1/8" NEO-CORK GASKET MATERIAL.
B	4" FITTING
C	FB-3" x 1/4"x3" WITH 5/8" $\phi$ HOLE ON CL (GROUNDING LUG)
D	1" FNPT 304 STAINLESS STEEL FITTING INSIDE & OUTSIDE TANK. 1" SCH 40 PIPE BLACK IRON PIPE (STAINLESS STEEL OPTIONAL) WITH 1/8" $\phi$ HOLES @ 3" SPACING. SUPPORTS AS NEEDED WITH STAINLESS STEEL U-BOLTS. BLACK IRON DOPED PLUG. PIPE INSTALLED IN TWO PIECES WITH 1" STAINLESS STEEL PIPE COUPLING. SHIP LOOSE, INSTALLATION ON SITE BY OTHERS.

AREO-POWER: =

△	-		
---	---	--	--

AREO-POWER®

20,000 GAL 120"  $\phi$  SW AG HORIZONTAL

CUSTOMER:

PROJECT: FRAC TANK w/ AERATOR PIPE

QUOTE NO: SUB

SCALE:	DATE:	DWG. BY:	CHK'D BY:
1/4"=1'-0"	8/5/11	003	75634