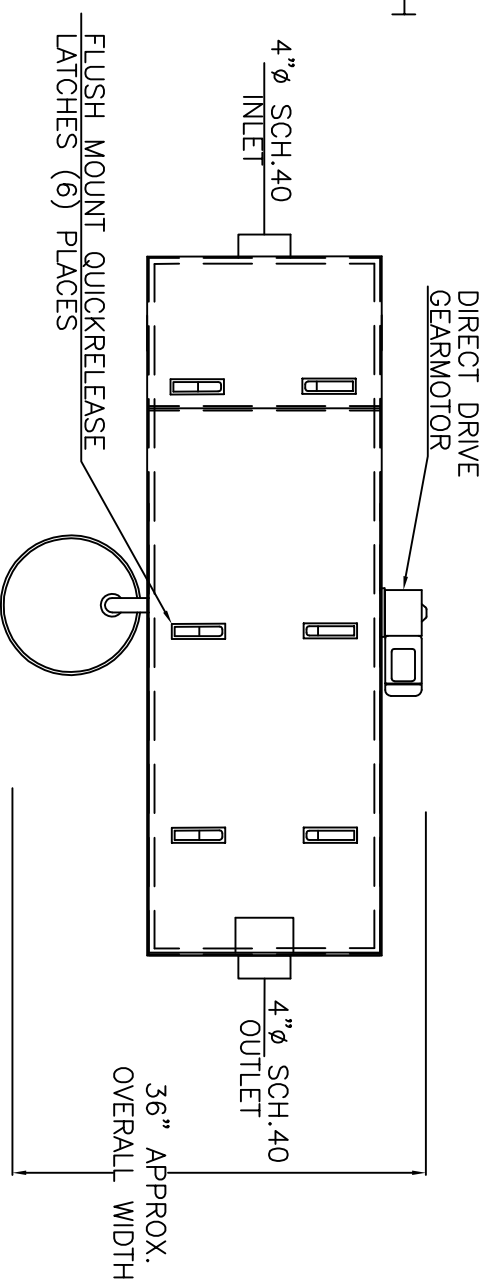


GENERAL SPECIFICATIONS

NO. REQ'D: 1
 MODEL: 100 FIELD REVERSIBLE
 MATERIAL: 304 STAINLESS STEEL 2-B FINISH
 GAUGE OR THICKNESS OF MATERIAL
 12 ga. THROUGHOUT
 APPROX. WEIGHT: 650 lbs.
 STATIC WATER CAPACITY: 104 gal
 GREASE HOLDING CAPACITY: 636 lbs.
 RETENTION TIME: 61.54 SEC.

ELECTRICAL INFORMATION

UNIT MUST BE PLUGGED INTO
 A GFI(GROUND FAULT INTERRUPT)RECEPTACLE.
 GEARMOTOR- .933 FLA. 115V, 60hz
 ELECTRIC HEATING ELEMENT- 115 V, 1500 W
 NOTE:
 THE GREASE STOPPER IS NOT A TRAP FOR SEWER GAS WE
 SUGGEST A TRAP DOWN STREAM FROM THE A.G.I.



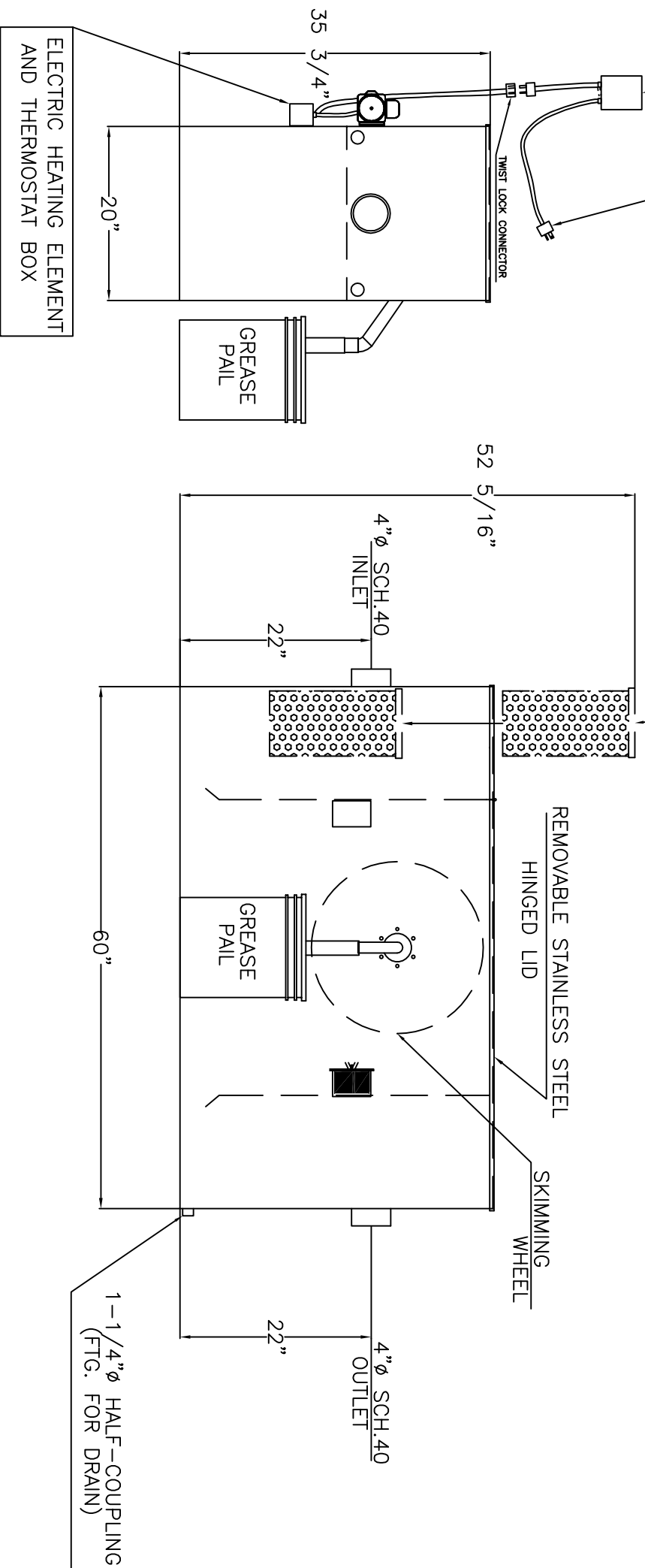
FLUSH MOUNT QUICKRELEASE
 LATCHES (6) PLACES

36" APPROX.
 OVERALL WIDTH

REMOTE DIGITAL TIMER
 8' 12-3 SJ POWER CORD
 TO BE PLUGGED INTO A GFI RECEPTACLE

14"W X 15"H X 7-1/2"L
 REMOVABLE SCREEN BASKET

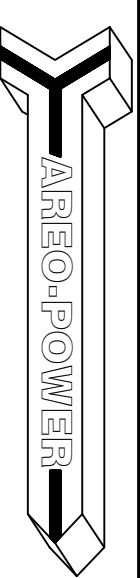
LEFT TO RIGHT OR
 RIGHT TO LEFT AS
 NEEDED



ELECTRIC HEATING ELEMENT
 AND THERMOSTAT BOX

NOTE: ALL RIGHTS RESERVED. THIS
 DRAWING MUST NOT BE REPRODUCED IN
 ANY FORM WITHOUT THE WRITTEN
 PERMISSION OF AREO POWER.
 AREO POWER SHALL BE RESPONSIBLE
 ONLY FOR ITEMS INDICATED ON THIS
 FABRICATION DRAWING UNLESS OTHERWISE
 NOTED. CUSTOMER IS RESPONSIBLE FOR
 VERIFYING CORRECTNESS OF SIZE AND
 LOCATION OF FITTINGS, ACCESSORIES, AND
 COATINGS SHOWN ON THIS DRAWING.

REVISIONS	



GREASE STOPPER MODEL100
 FIELD REVERSIBLE

CUSTOMER:

PROJECT:

QUOTE NO:

SCALE: 3/4"=1' DATE: 1/25/10 DWG. BY: CLO CHK'D BY: AREO POWER 100 FR