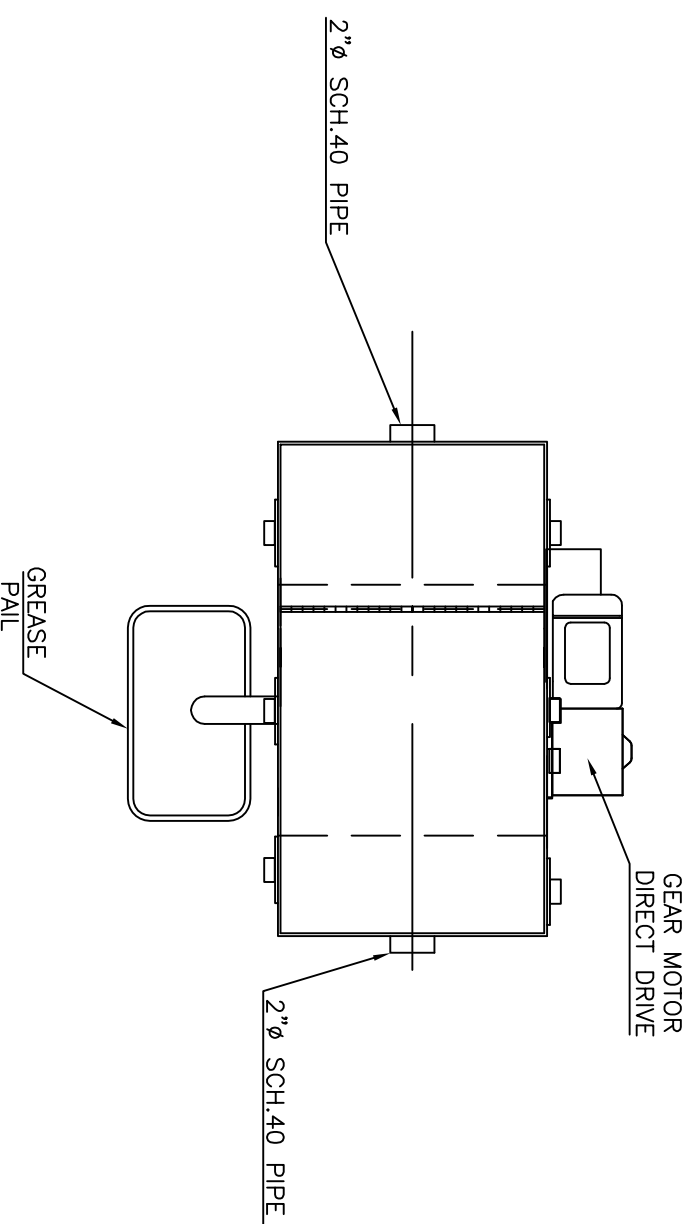


NOTE: ALL RIGHTS RESERVED. THIS DRAWING MUST NOT BE REPRODUCED IN ANY FORM WITHOUT THE WRITTEN PERMISSION OF AREO POWER. AREO POWER SHALL BE RESPONSIBLE ONLY FOR ITEMS INDICATED ON THIS FABRICATION DRAWING UNLESS OTHERWISE NOTED. CUSTOMER IS RESPONSIBLE FOR VERIFYING CORRECTNESS OF SIZE AND LOCATION OF FITTINGS, ACCESSORIES, AND COATINGS SHOWN ON THIS DRAWING.

GENERAL SPECIFICATIONS

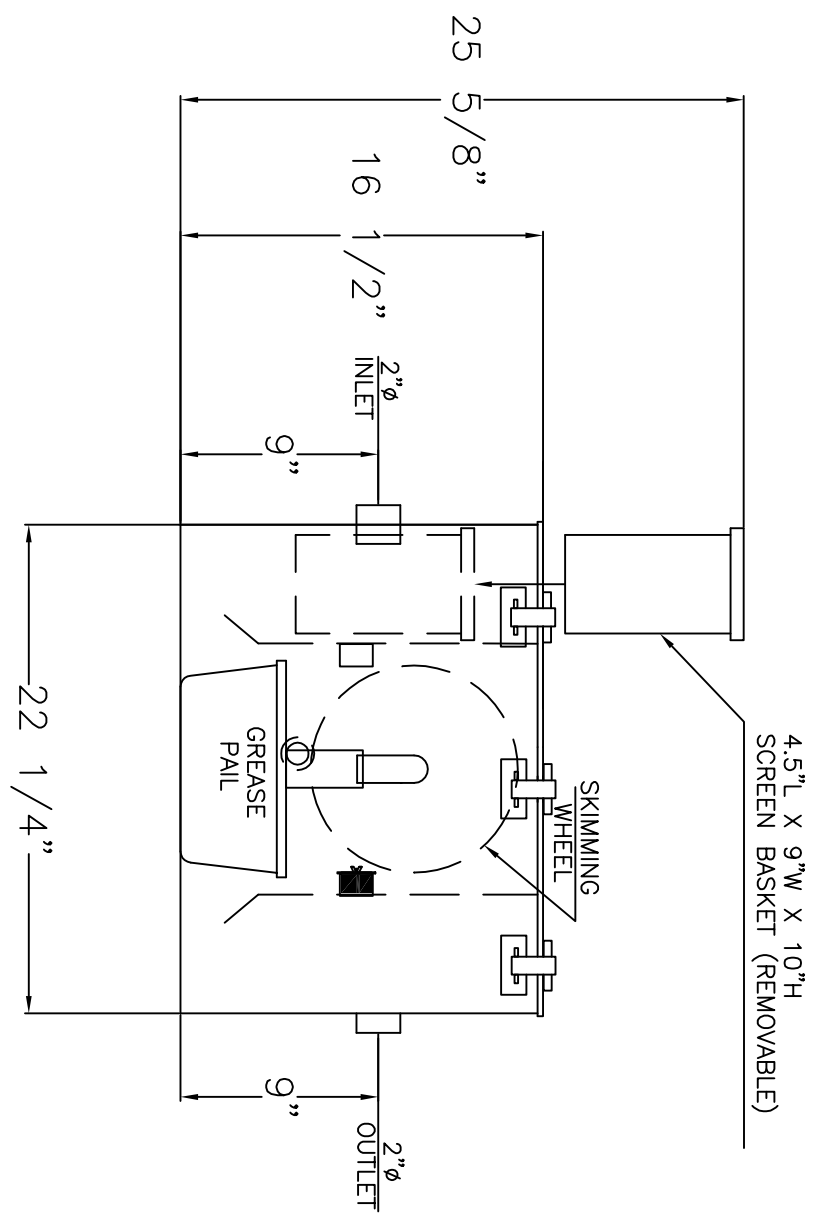
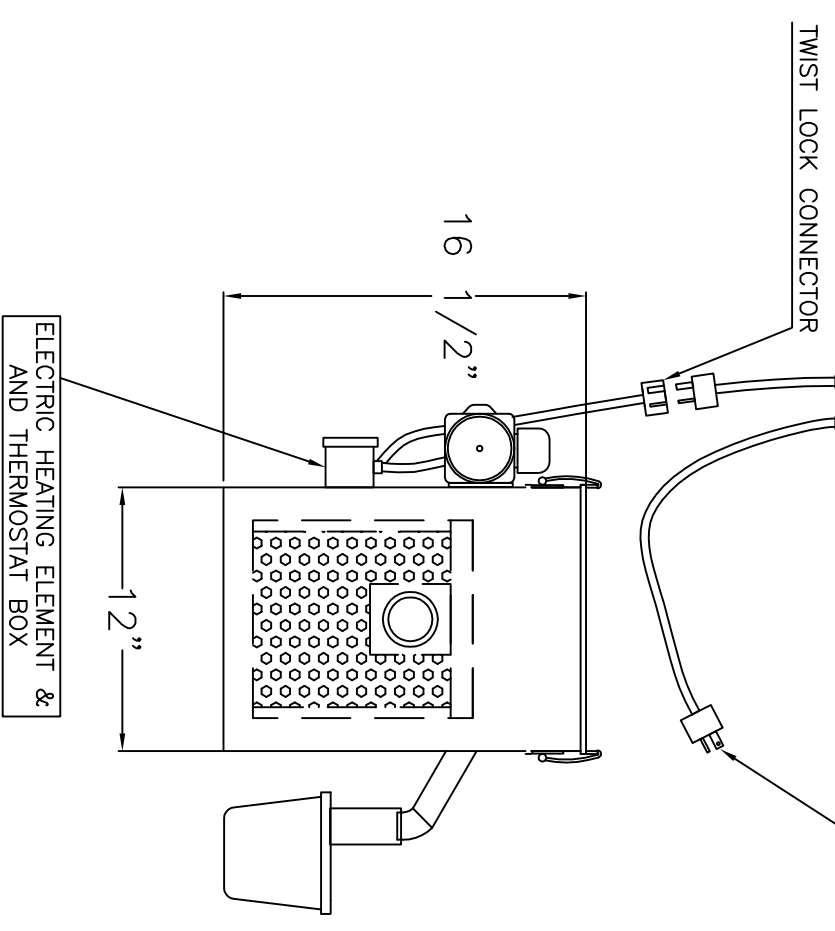
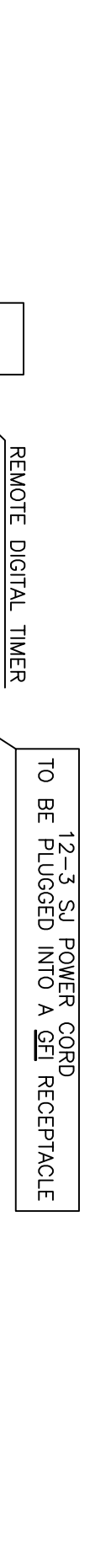
NO. REQ'D: 15 FIELD REVERSIBLE
 MODEL: 304 STAINLESS STEEL 2-B FINISH
 MATERIAL: 14 ga. THROUGHOUT
 BUILD IN ACCORDENCE WITH U.L. 1D42
 APPROX. WEIGHT: 100 lbs.
 STATIC WATER CAPACITY: 9.2 gal
 GREASE HOLDING CAPACITY: 49.92 lbs.
 RETENTION TIME: 36.8 SEC.



ELECTRICAL INFORMATION

UNIT MUST BE PLUGGED INTO A GFI(GROUND FAULT INTERRUPT)RECEPTACLE.
 GEARMOTOR— .933 FLA. 115V, 60hz
 ELECTRIC HEATING ELEMENT— 115 V, 1500 W

NOTE:
 THE A.G.I. IS NOT A TRAP FOR SEWER GAS WE SUGGEST A TRAP DOWN STREAM FROM THE A.G.I.



LEFT TO RIGHT OR
 RIGHT TO LEFT AS
 NEEDED

REVISIONS	

AREO-POWER

GREASE STOPPER MODEL15
 FIELD REVERSIBLE

CUSTOMER: _____

PROJECT: _____

QUOTE NO: _____

SCALE: 1"=1' DATE: 12/17/09 DWG. BY: CLO. CHK'D BY: _____

AREOPOWER15 FR