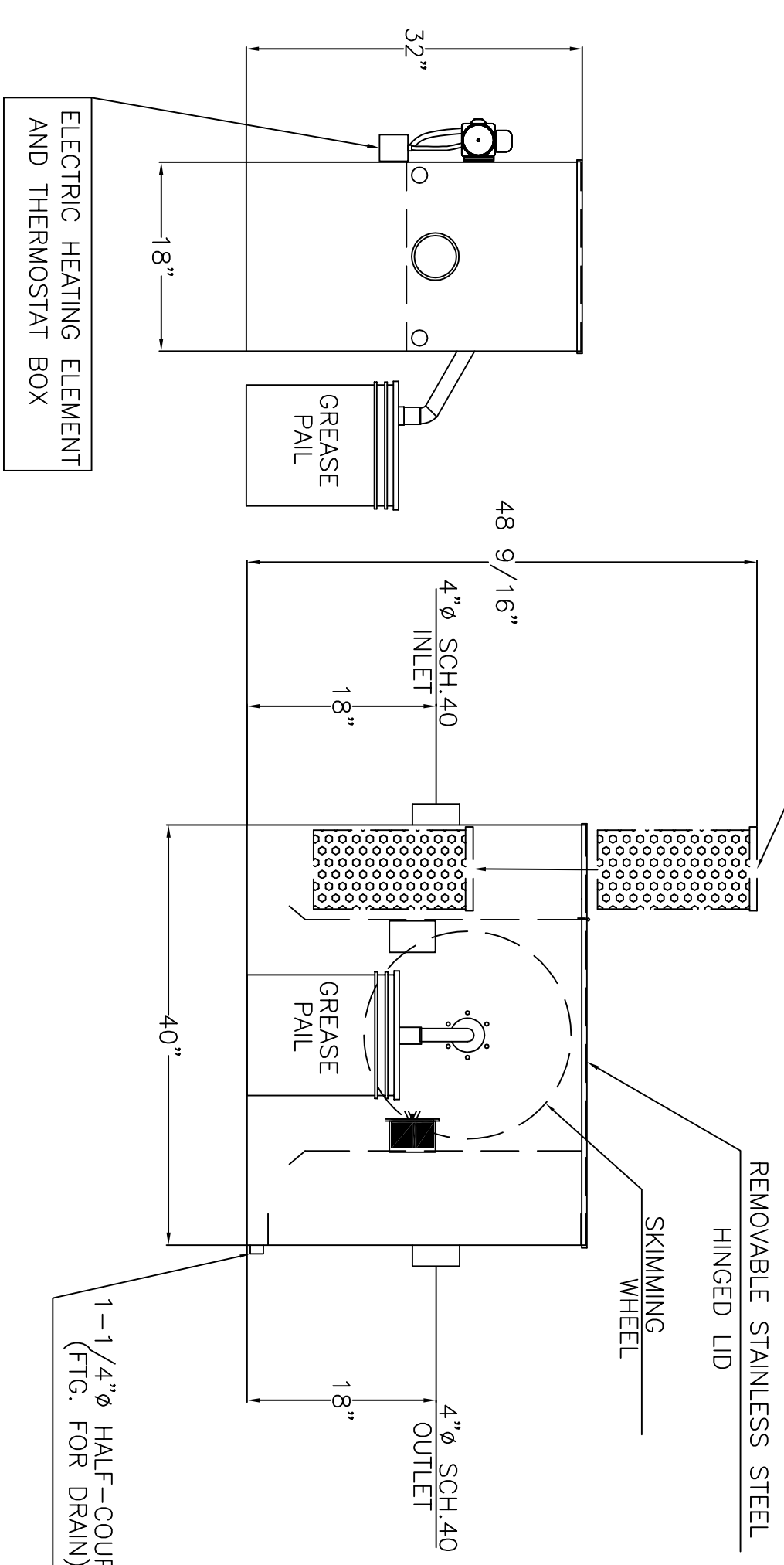
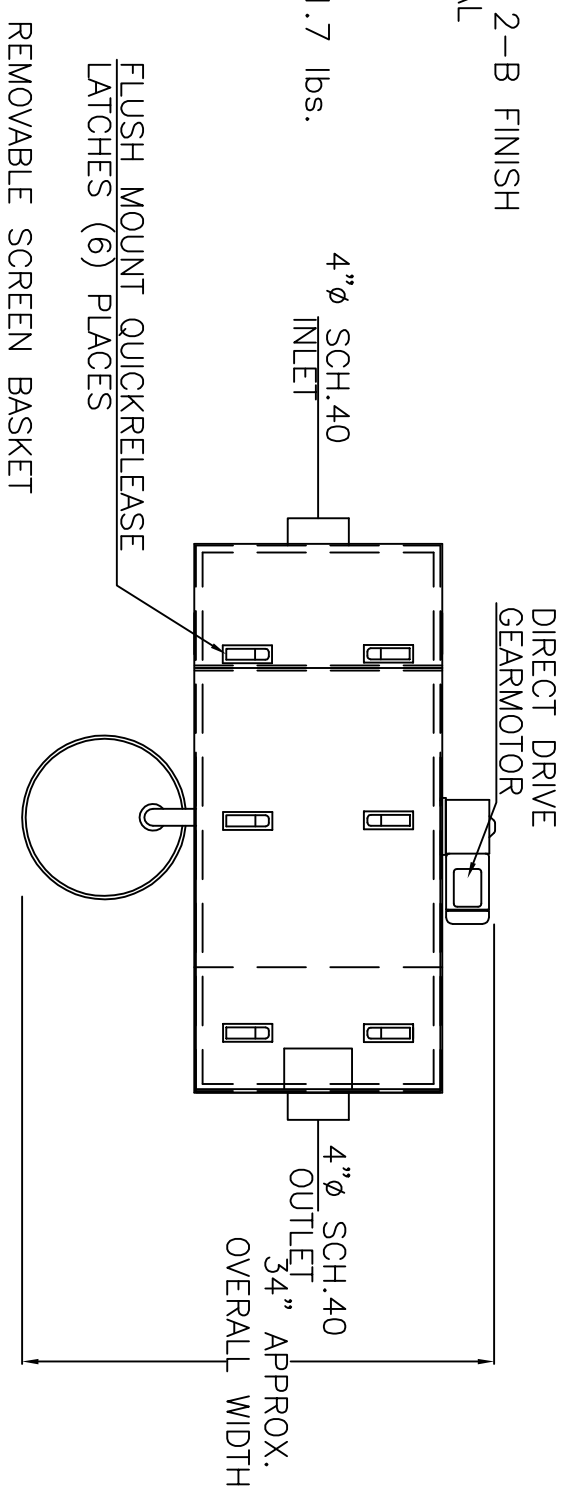


GENERAL SPECIFICATIONS

NO. REQ'D: 1
 MODEL: 50 FIELD REVERSIBLE
 MATERIAL: 304 STAINLESS STEEL 2-B FINISH
 GAUGE OR THICKNESS OF MATERIAL 12 ga. THROUGHOUT
 APPROX. WEIGHT: 399 lbs.
 STATIC WATER CAPACITY: 50 gal
 GREASE HOLDING CAPACITY: 291.7 lbs.
 RETENTION TIME: 58.5 SEC.



ELECTRICAL INFORMATION

UNIT MUST BE PLUGGED INTO A GFI(GROUND FAULT INTERRUPT)RECEPTACLE.
 GEARMOTOR - .933 FLA. 115V, 60hz
 ELECTRIC HEATING ELEMENT - 115 V, 1500 W

NOTE:
 THE A.G.I. IS NOT A TRAP FOR SEWER GAS WE SUGGEST A TRAP DOWN STREAM FROM THE A.G.I.

LEFT TO RIGHT OR
 RIGHT TO LEFT AS
 NEEDED

NOTE: ALL RIGHTS RESERVED. THIS DRAWING MUST NOT BE REPRODUCED IN ANY FORM WITHOUT THE WRITTEN PERMISSION OF AREO POWER. AREO POWER SHALL BE RESPONSIBLE ONLY FOR ITEMS INDICATED ON THIS FABRICATION DRAWING UNLESS OTHERWISE NOTED. CUSTOMER IS RESPONSIBLE FOR VERIFYING CORRECTNESS OF SIZE AND LOCATION OF FITTINGS, ACCESSORIES, AND COATINGS SHOWN ON THIS DRAWING.

REVISIONS	

AREO-POWER

GREASE STOPPER MODEL 50
 FIELD REVERSIBLE

CUSTOMER: _____

PROJECT: _____

QUOTE NO: _____

SCALE: DATE: 3/4"=1' 1/25/10

DWG. BY: CLO

CHK'D BY: _____

DWG. NO: ARFO POWER 50 FR