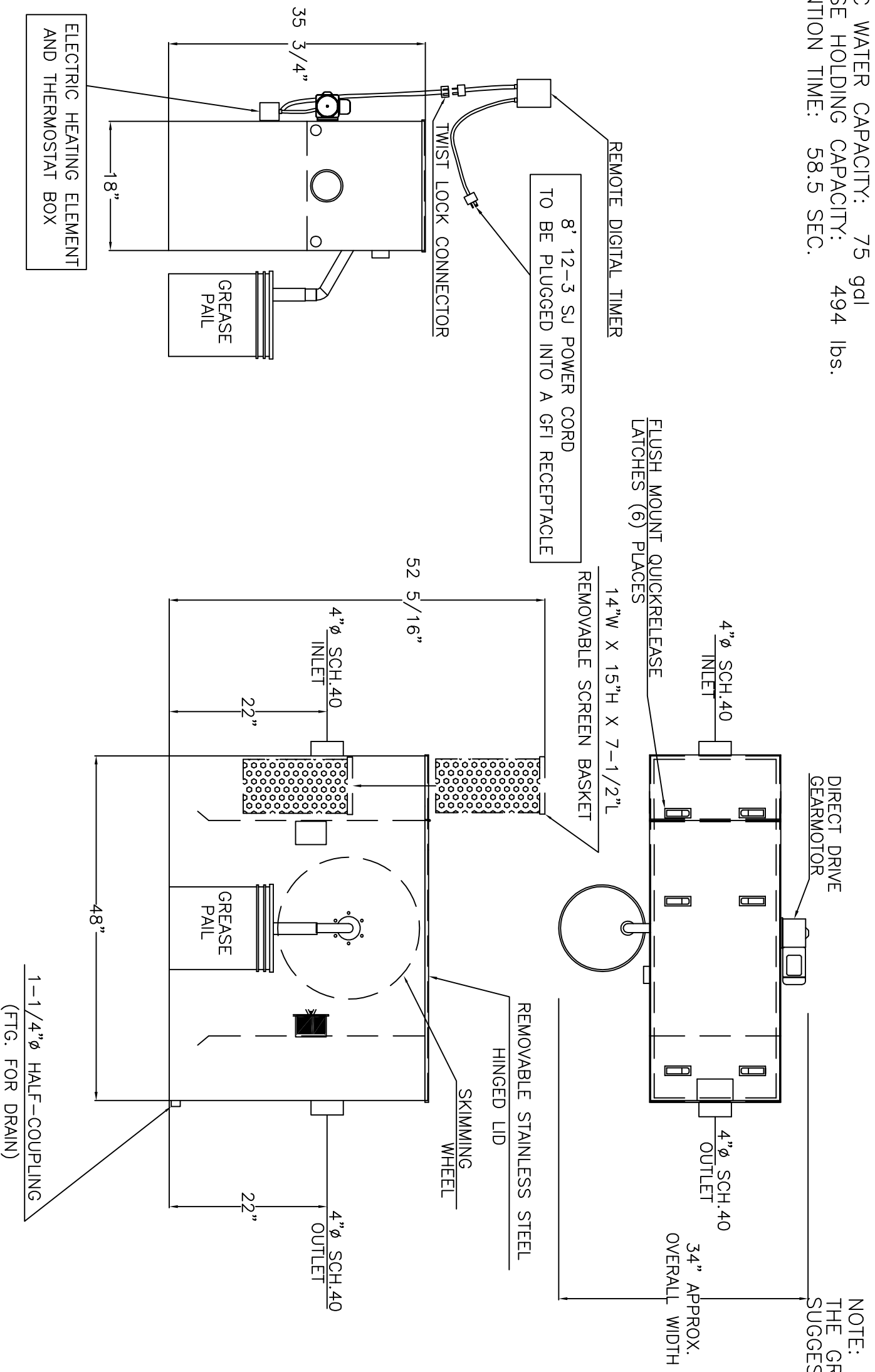


GENERAL SPECIFICATIONS

NO. REQ'D:
 MODEL: 75 FIELD REVERSIBLE
 MATERIAL: 304 STAINLESS STEEL 2-B FINISH
 GAUGE OR THICKNESS OF MATERIAL
 12 ga. THROUGHOUT
 APPROX. WEIGHT: 399 lbs.
 STATIC WATER CAPACITY: 75 gal
 GREASE HOLDING CAPACITY: 494 lbs.
 RETENTION TIME: 58.5 SEC.

ELECTRICAL INFORMATION

UNIT MUST BE PLUGGED INTO
 A GFI(GROUND FAULT INTERRUPT)RECEPTACLE.
 GEARMOTOR- .933 FLA. 115V, 60hz
 ELECTRIC HEATING ELEMENT- 115 V, 1500 W

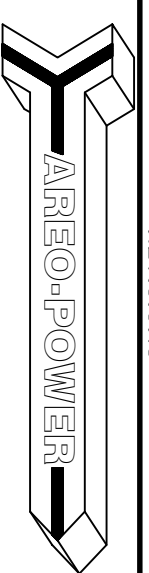


NOTE:
 THE GREASE STOPPER IS NOT A TRAP FOR SEWER GAS WE
 SUGGEST A TRAP DOWN STREAM FROM THE A.G.I.

LEFT TO RIGHT OR
 RIGHT TO LEFT AS
 NEEDED

NOTE: ALL RIGHTS RESERVED. THIS
 DRAWING MUST NOT BE REPRODUCED IN
 ANY FORM WITHOUT THE WRITTEN
 PERMISSION OF AREO POWER.
 AREO POWER SHALL BE RESPONSIBLE
 ONLY FOR ITEMS INDICATED ON THIS
 FABRICATION DRAWING UNLESS OTHERWISE
 NOTED. CUSTOMER IS RESPONSIBLE FOR
 VERIFYING CORRECTNESS OF SIZE AND
 LOCATION OF FITTINGS, ACCESSORIES, AND
 COATINGS SHOWN ON THIS DRAWING.

REVISIONS	



GREASE STOPPER MODEL 75
 FIELD REVERSIBLE

CUSTOMER:	
PROJECT:	
QUOTE NO:	CHK'D BY:
SCALE: 3/4"=1'	DATE: 1/25/10
DWG. BY: CLO	DWG. NO: ARFO POWER 75 FR