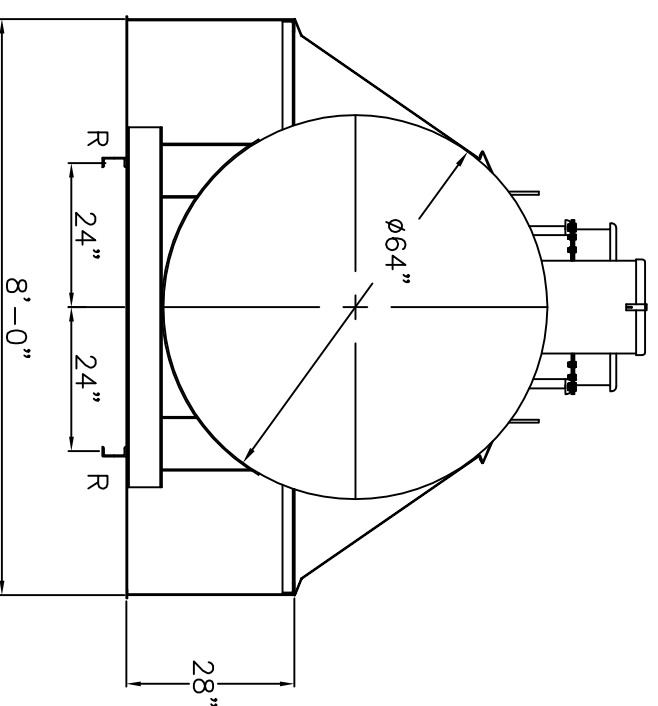
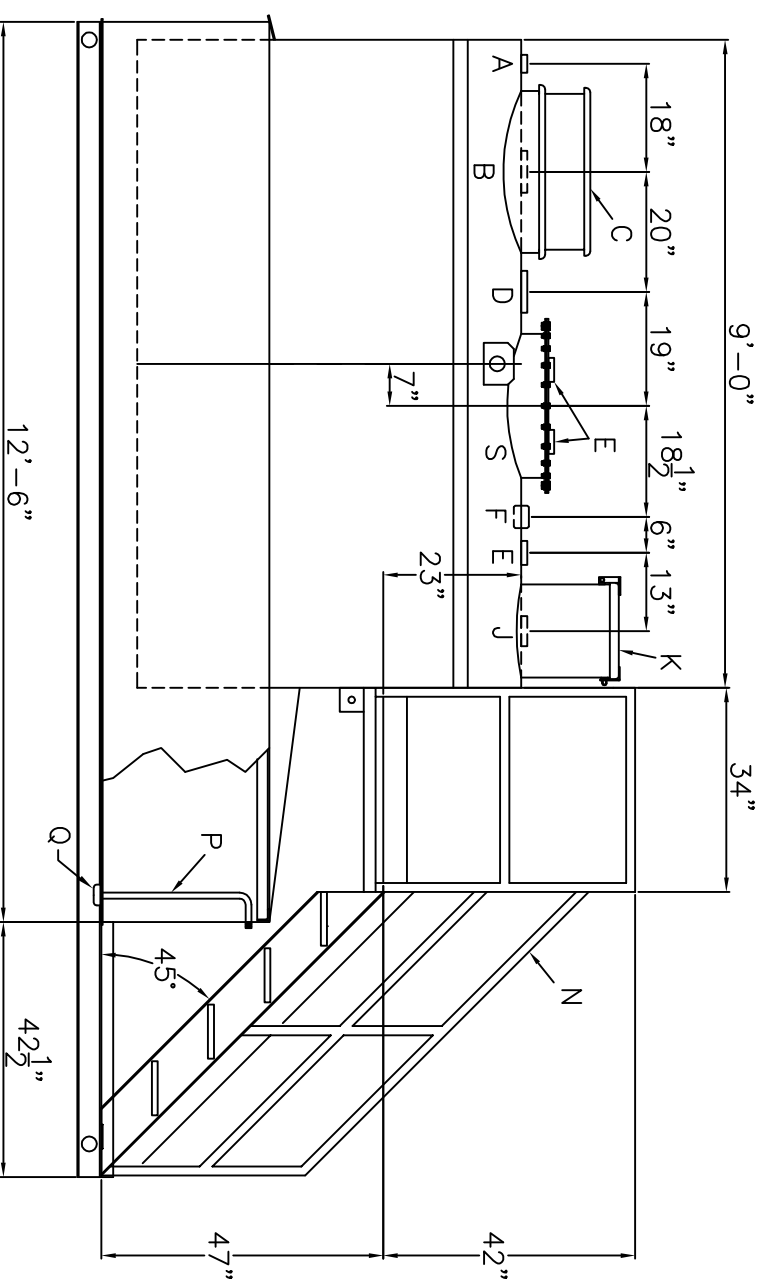
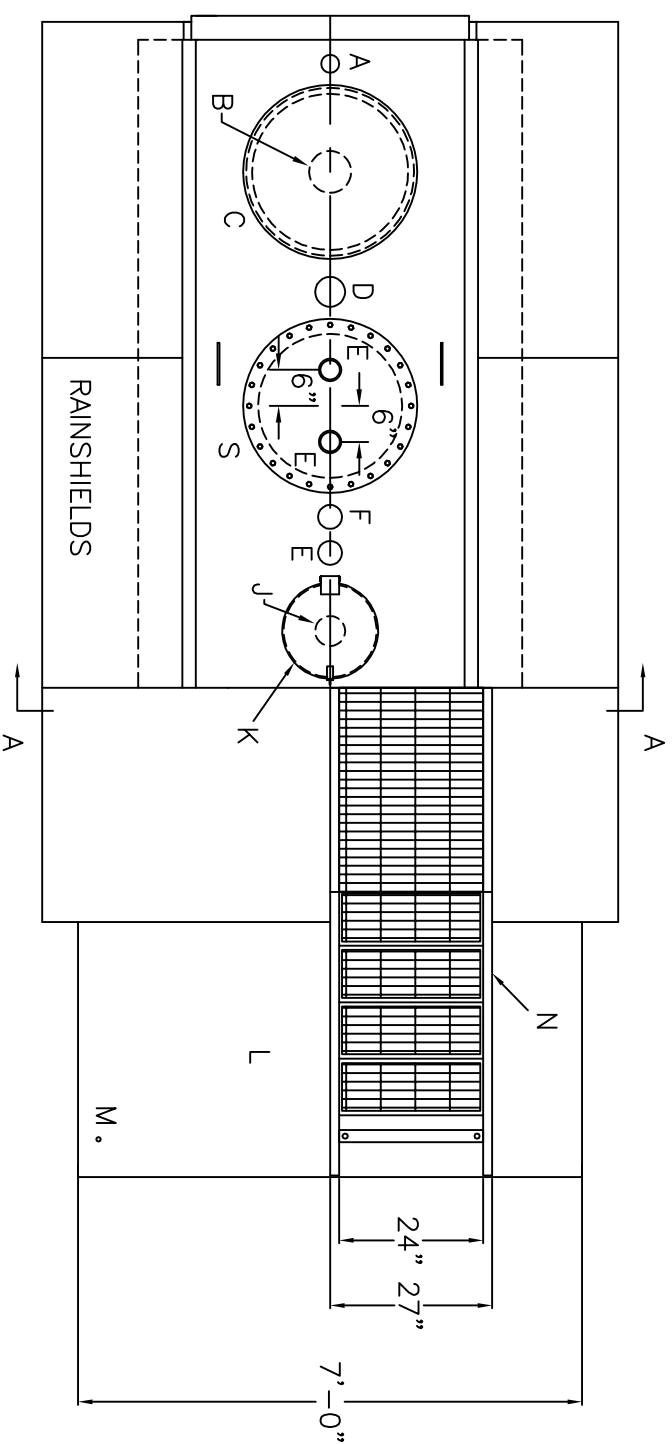


All rights reserved. This drawing or any part thereof must not be reproduced in any form without the written permission of Aero-Power Unitized Fueler, Inc.



TANK SPECIFICATIONS		FITTING LEGEND	
TANK CAPACITY	- 1,500 GALLONS	A	2" NORMAL VENT FITTING
TANK MATERIAL	- MILD CARBON STEEL	B	6" FITTING FOR 6" EMERGENCY VENT USE
THICKNESS - SHELL	- 7 GAUGE	C	VENT DEFLECTOR ASSEMBLY - SHIPPED LOOSE
THICKNESS - HEADS	- 7 GAUGE	D	4" FITTING
CONSTRUCTION	- LAP WELD OUTSIDE ONLY	E	3" FITTING
TANK TEST	- 5 PSIG	F	3" FULL COUPLING
INT. FINISH	- NONE	G	-
EXT. FINISH	- PRIMER	H	-
LABEL	- UL 142 ENTIRE UNIT	J	4" FILL FITTING
<b>DIKE SPECIFICATIONS</b>		K	FILL CONTAINMENT CHAMBER
DIKE CAPACITY	- 1,745 GALLONS	L	DRIP PAN PLATFORM WITH 2" LIP
MATERIAL	- MILD CARBON STEEL	M	1/2" DRAIN FITTING
THICKNESS - SHELL	- 7 GAUGE	N	STAIRS AND PLATFORM - SHIP LOOSE
CONSTRUCTION	- WELDED	P	3/4" PUMP OUT PIPE
FINISH - IN AND OUT	- PRIMER	Q	3" PIPE CAP SUMP
		R	4" X 5.4# CHANNEL
		S	24" ACCESS MANWAY

CHUTE FOR EMERGENCY VENT CHAMBER AND OVERFLOW PIPE FOR FILL CHAMBER NOT INCLUDED FOR NASSAU COUNTY UNITS

<b>AREO-POWER</b> ®			
1,500 GAL NASSUA CO. DIKE TANK			
CUSTOMER:			
PROJECT:			
QUOTE NO.:	DATE:	DWG. BY:	CHK'D BY:
3/8"-1'-0"			
SCALE:		DATE:	
3/8"-1'-0"		AP1500DK64NASSAU	