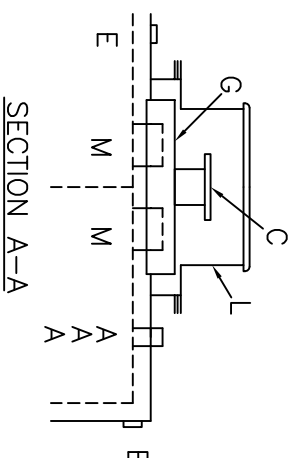
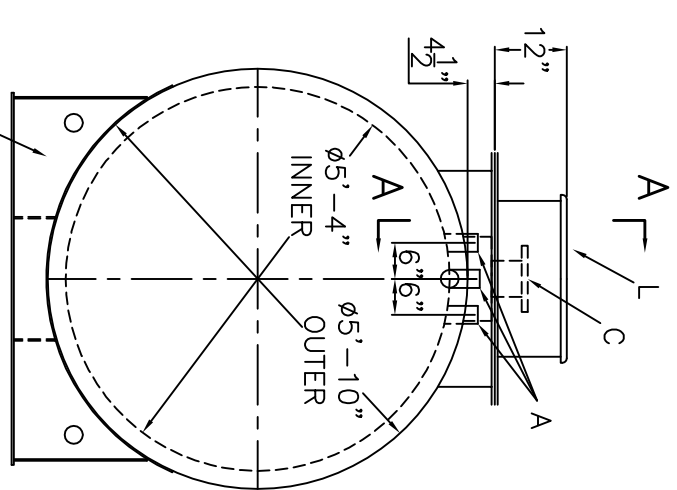
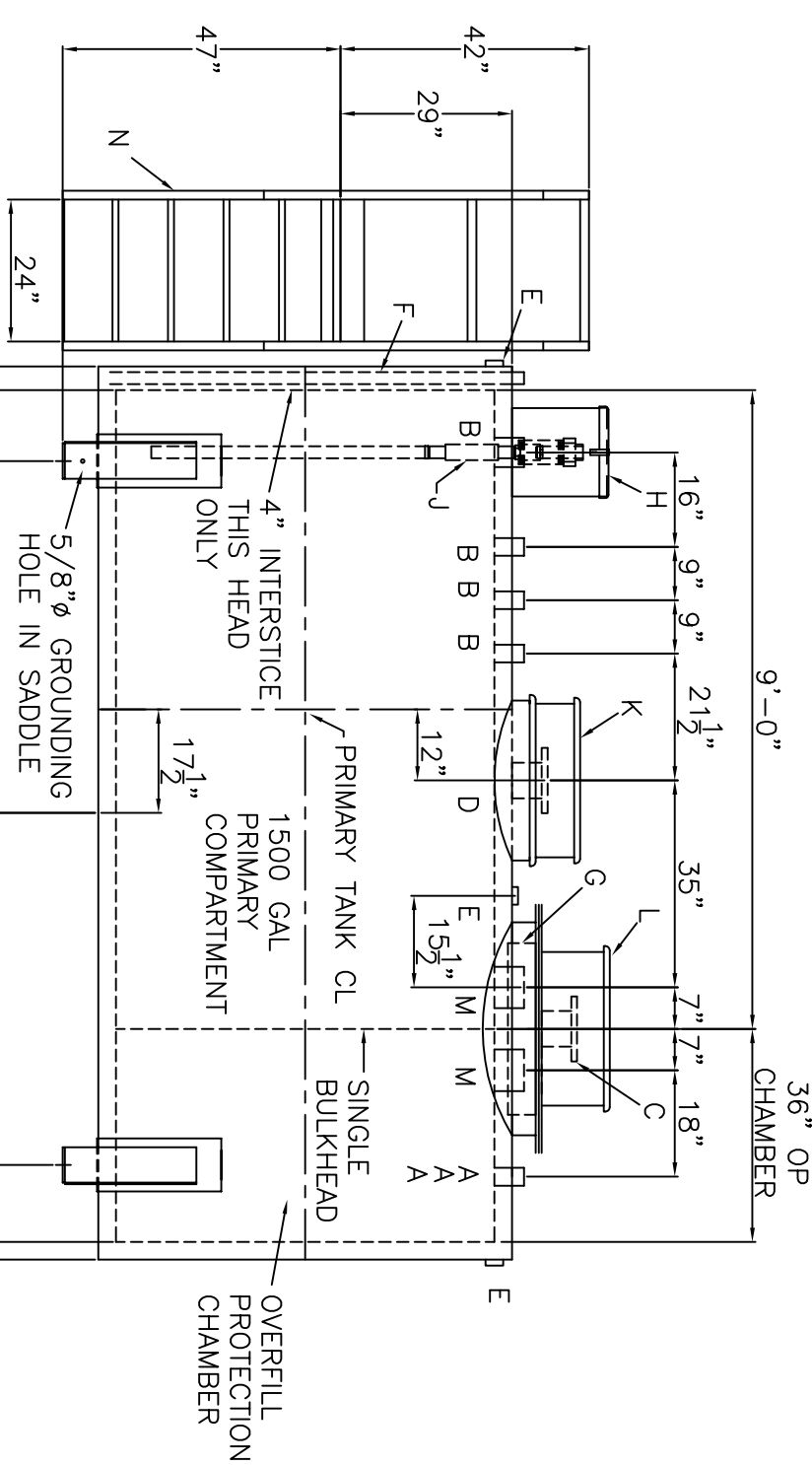
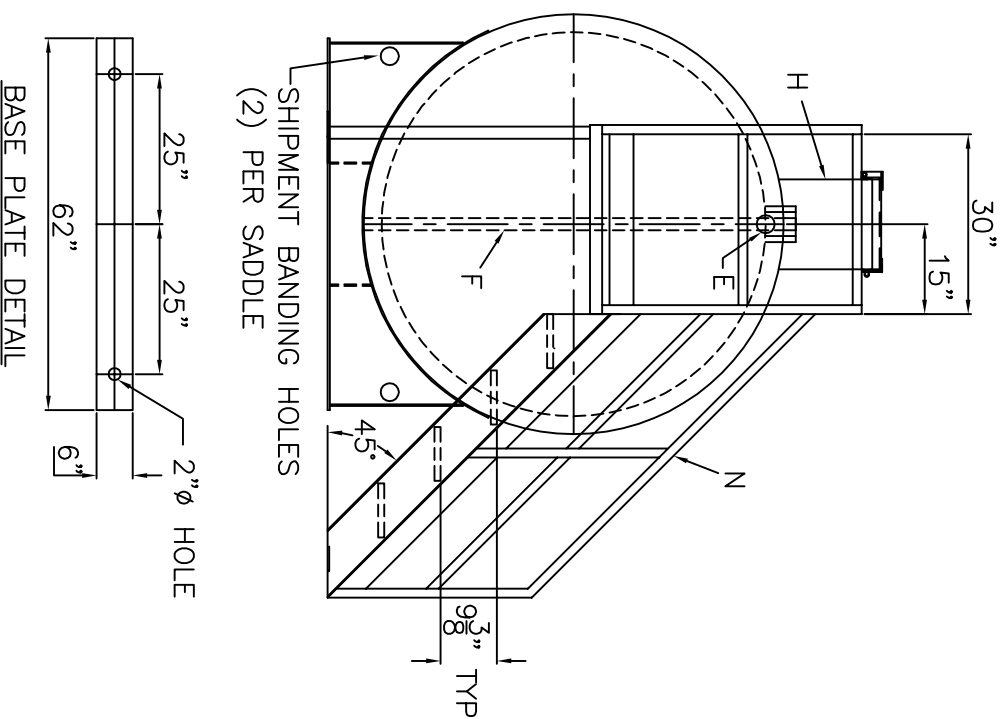


NOTE: ALL RIGHTS RESERVED. THIS DRAWING MUST NOT BE REPRODUCED IN ANY FORM WITHOUT THE WRITTEN PERMISSION OF AREO-POWER®. AREO-POWER® SHALL BE RESPONSIBLE ONLY FOR ITEMS INDICATED ON THIS FABRICATION DRAWING UNLESS OTHERWISE NOTED. CUSTOMER IS RESPONSIBLE FOR VERIFYING CORRECTNESS OF SIZE AND LOCATION OF FITTINGS, ACCESSORIES, AND COATINGS SHOWN ON THIS DRAWING.

TOUCH UP OF FINISHED PAINT IS REQUIRED BY INSTALLATION CONTRACTOR. TOUCH UP PAINT SHIPPED WITH TANK.

SHIP LOOSE  
(2) 6" FLANGED EMERGENCY VENTS

NOTES:  
STRIKER PLATES ARE NOT SUPPLIED ON FIREGUARDS® UNLESS SPECIFIED



SECTION A-A

3" LIGHTWEIGHT INSULATION MATERIAL WITHIN INTERSTICE  
12'-0" INNER  
12'-7" OUTER

CAPACITY : 1,500 GALLONS

TYPE: FIREGUARD® CYLINDRICAL WITH 20% OP CHAMBER  
FIREGUARD® IS A TRADEMARK OF THE STEEL TANK INSTITUTE

NO. REQ. - 1  
OPERATING PRESSURE - ATMOSPHERIC  
SPECIFIC GRAVITY = 1.0  
TANK MATERIAL - MILD CARBON STEEL  
THICKNESS - INNER - HEADS AND SHELL - 7 GAUGE  
THICKNESS - OUTER - HEADS AND SHELL - 7 GAUGE  
MIN. GAUGE OR THICKNESS (PER U.L. 2085)  
CONSTRUCTION - INNER - LAP WELD OUTSIDE ONLY  
CONSTRUCTION - OUTER - LAP WELD OUTSIDE ONLY  
TANK TEST - PER UL 2085  
INT. FINISH - NONE  
EXT. FINISH - SP-6 BLAST, FINISH PAINT WHITE  
LABEL - UL 2085 AND FIREGUARD® PER st'

A	2" FEMALE FIREGUARD COUPLING
B	4" FEMALE FIREGUARD COUPLING
C	6" FFSO 150# FLANGE - PRIMARY EMERGENCY VENT USE ONLY (MOUNTED IN "G" TOP)
D	6" FFSO 150# FLANGE THROUGH OUTER SHELL ONLY, MARK WITH SPECIAL WARNING LABEL INTERSTITIAL EMERGENCY VENT USE ONLY
E	2" FITTING THROUGH OUTER SHELL ONLY WITH CAST IRON PLUG - MFG USE ONLY
F	2" INTERSTITIAL MONITOR PIPE - MALE NPT END
G	29" LONG x 14" WIDE x 4" HIGH CLOSED TOP STEEL ENCLOSURE, WELDED TO TANK OUTER SHELL
H	10 GAL SPILL CHAMBER WITH HINGE & HASP - APPROX 15" diameter x 13-1/2" HIGH, WELD TO TANK.

J	INSTALLED 2" OVERFILL PREVENTION VALVE WITH 2" FEMALE THREADED TOP AND DROP PIPE VALVE TO BE SET FOR 90% OR 95% - PLEASE INDICATE DESIRED SETTING (CIRCLE ONE)
K	EMERGENCY VENT CHAMBER
L	36" x 1/4" PLATE TIGHT BOLT MANWAY WELDED TO TANK OUTER WALL ONLY, 1/8" THK. NEO-CORK GASKET AND 12" HIGH EMERGENCY VENT CHAMBER - EXTENSION TO SHIP LOOSE FOR INSTALLATION ON SITE BY OTHERS
M	6" FEMALE FIREGUARD COUPLING
N	47" HIGH STANDARD AREO-POWER FREE STANDING STAIR & PLATFORM ASSEMBLY, PAINT: SAFETY YELLOW AND SHIP LOOSE FOR INSTALLATION ON SITE BY OTHERS

LEGEND

**AREO-POWER**®  
PATENT NUMBER 5346093

1,500 GAL 64" diameter CYL. OP FIREGUARD®  
PATENT: 5,695,089 PATENT: 5,809,650  
CUSTOMER:

PROJECT:

QUOTE NO: \_\_\_\_\_  
SCALE: 3/8" = 12"  
DATE: \_\_\_\_\_  
DVG. BY: \_\_\_\_\_  
CHK'D BY: \_\_\_\_\_  
DVG. NO: 77576