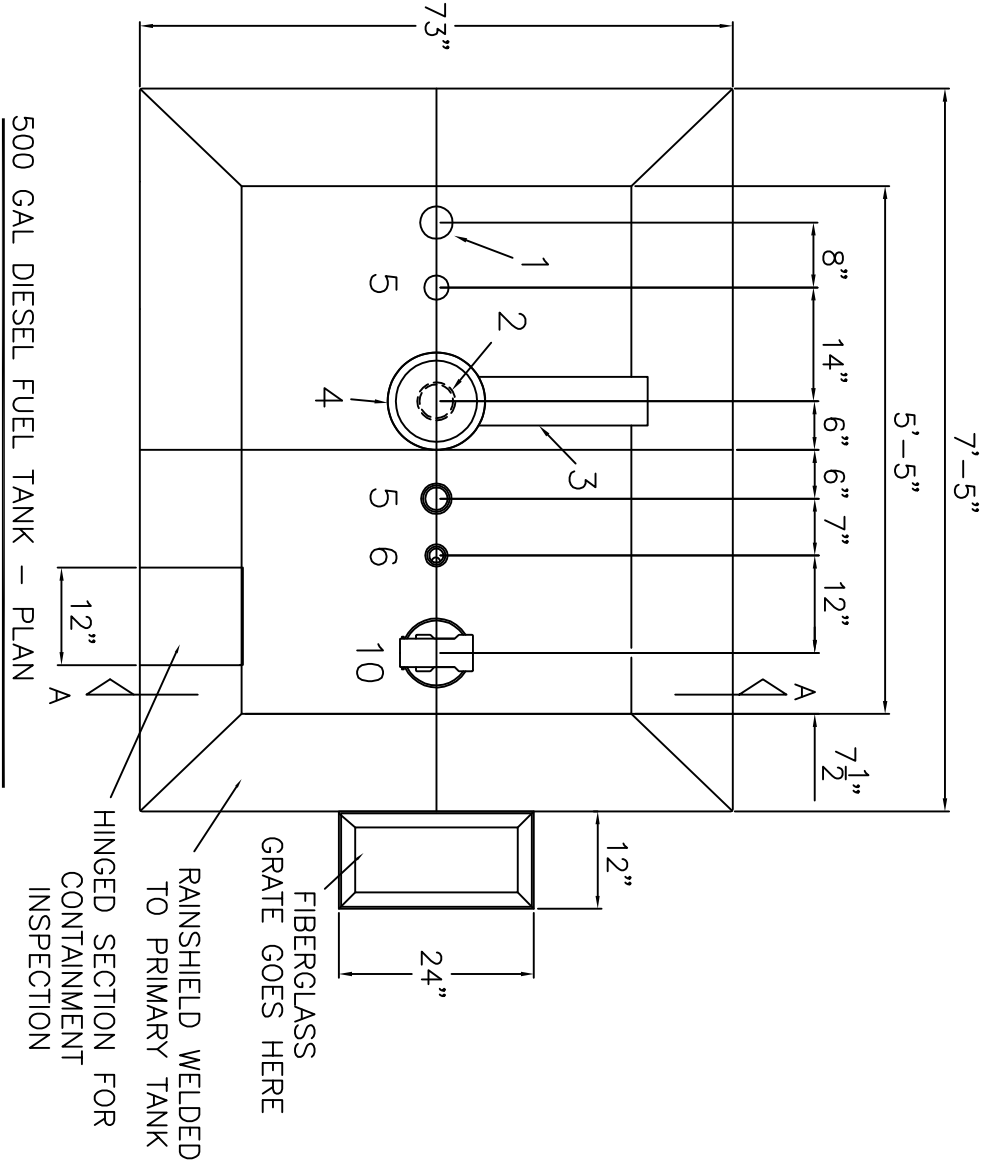
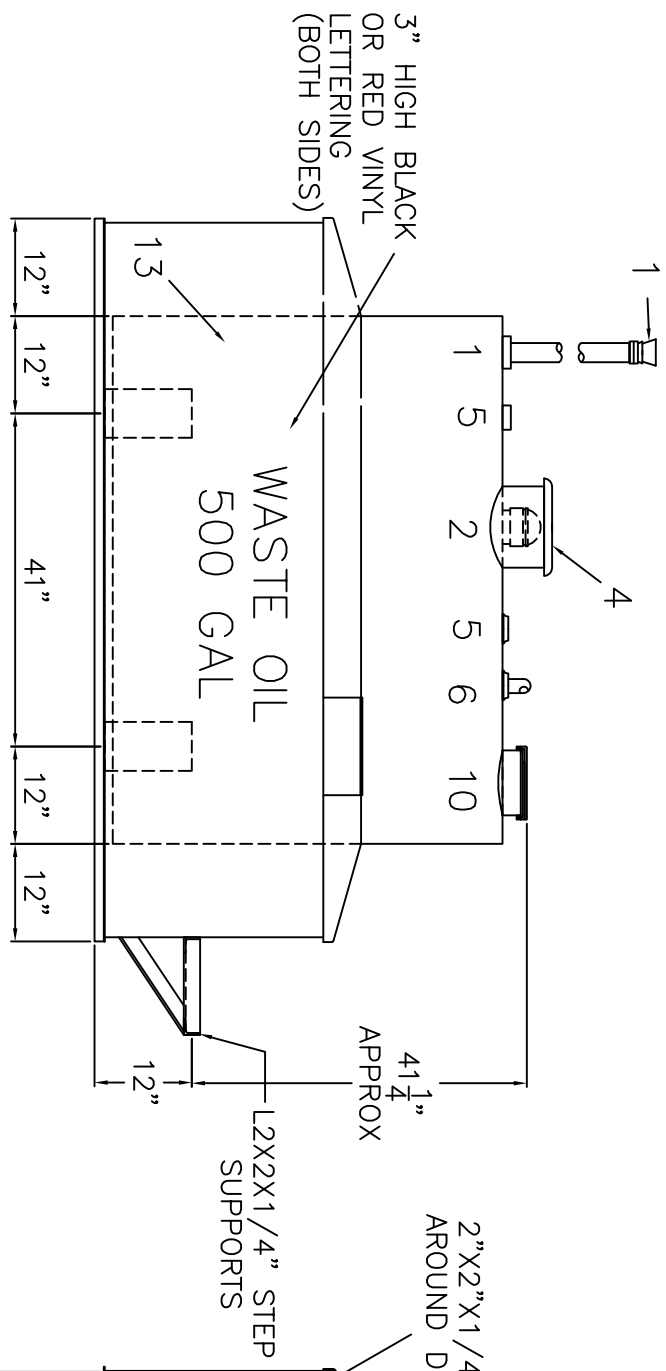


TOUCH UP OF FINISHED PAINT IS REQUIRED BY INSTALLATION CONTRACTOR. TOUCH UP PAINT SHIPPED WITH TANK.

NOTE: SHOP LOCATE LIFTING LUGS AS NEEDED.



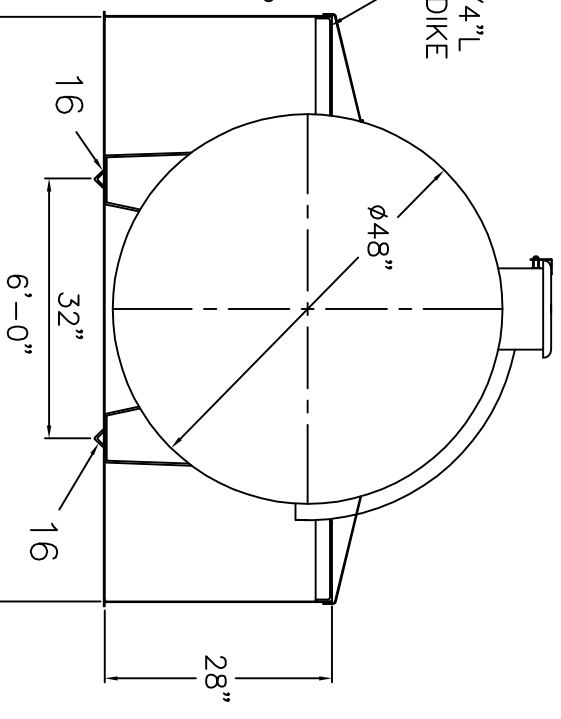
500 GAL DIESEL FUEL TANK - PLAN



500 GAL DIESEL FUEL TANK - ELEVATION

NOTES:

1. PRIMARY TANK:
SHELL - 12 GA. HEAD - 12 GA.
CONTAINMENT: 12 GA.
2. MATERIAL - MILD CARBON STEEL
3. FACTORY TEST AT 5-7 PSIG.
4. ENTIRE UNIT UL LISTED AND IS FOR OUTDOOR USE.
5. EXTERIOR FINISH (INCLUDING INTERIOR OF DIKE) - BRUSH BLAST, WHITE FINISH PAINT
6. ALL DIMENSIONS ARE APPROXIMATE.
7. CONTAINMENT CAPACITY >150%
8. PRIMARY TANK SHELL AND HEAD WELDS TO BE AS SPECIFIED IN UL142.
9. ANY JOINT NOT DETAILED SHALL BE A CONTINUOUS FULL FILET WELD.
10. A 8' WIDE X 10' LONG X 8" THICK CONCRETE PAD REINFORCED WITH 6X6 10-10 WWM MUST BE PROVIDED. TANKS LOCATED IN HEAVILY TRAFFICKED AREAS MUST BE PROTECTED BY TRAFFIC BOLLARDS. THE BOLLARDS MUST BE MADE OF SCH80 STEEL PIPE, CONCRETE FILLED AND SET IN THE GROUND TO A DEPTH OF 4'. THE BOLLARDS WILL BE SET IN CONCRETE FOOTINGS. THE BOLLARDS SHALL BE A MINIMUM OF 4' ABOVE GRADE. BOLLARDS SHALL BE PLACED NO MORE THAN 4' APART.



500 GAL DIESEL FUEL TANK - SECTION AA

ITEM	DESCRIPTION
------	-------------

①	3" NORMAL VENT CAP
②	4"-8 OZ. EMERGENCY VENT - SHIP LOOSE
③	EMERGENCY VENT OVERFLOW CHUTE
④	VENT DEFLECTOR ASSEMBLY
⑤	2" FNPT FITTING (SPARE)
⑥	2" LEVEL GAUGE - SKULLY GOLDEN GAUGE
⑦	3" SCH 40 x 8' SUPPLIED (CUT TO SUIT)
⑧	
⑨	
⑩	8" FILL HATCH WITH REMOVABLE STRAINER
⑪	
⑫	
⑬	
⑭	1 1/2" L (2)

SHIP LOOSE: (INSTALLATION ON SITE BY OTHERS)
 (1) 4" THREADED EMERGENCY VENT
 (1) 3" x 8' GALZ. PIPE (TBO)
 (1) 2" MECHANICAL LEVEL GAUGE

NOTE: ALL RIGHTS RESERVED. THIS DRAWING MUST NOT BE REPRODUCED IN ANY FORM WITHOUT THE WRITTEN PERMISSION OF AREO-POWER®. AREO-POWER® SHALL BE RESPONSIBLE ONLY FOR ITEMS INDICATED ON THIS FABRICATION DRAWING UNLESS OTHERWISE NOTED. CUSTOMER IS RESPONSIBLE FOR VERIFYING CORRECTNESS OF SIZE AND LOCATION OF FITTINGS, ACCESSORIES, AND COATINGS SHOWN ON THIS DRAWING.

△	CHANGED EMERGENCY VENT FROM 2" TO 4"	10/21/08 003
---	--------------------------------------	--------------

AREO-POWER®
 PATENT NUMBER 5346093
 500 GAL 48" Ø FUELER

CUSTOMER: _____
 PROJECT: SUFFOLK CO - WASTE OIL TANK
 QUOTE NO: _____
 SCALE: DATE: DIVG. BY: _____
 1/2"=1'-0" _____
 APP 500WVO