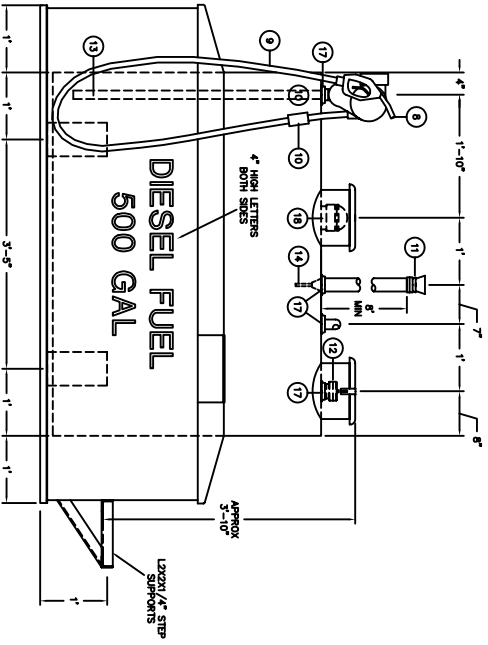


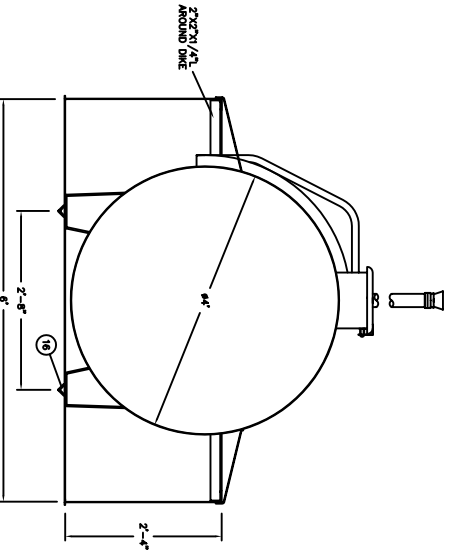
500 GAL DIESEL FUEL TANK - PLAN
SCALE: 1"=2'-0"



500 GAL DIESEL FUEL TANK - ELEVATION
SCALE: 1"=2'-0"

NOTES:

1. PRIMARY TANK - SHELL - 12 GA. HEAD - 12 GA. CONTAINMENT: 12 GA.
2. MATERIAL - MILD CARBON STEEL.
3. FACTORY TEST AT 5-7 PSIG.
4. ENTIRE UNIT IS LISTED AND IS FOR OUTDOOR USE.
5. EXTENSION FURNISH (INCLUDING INTERIOR OF DOME) TO WHITE FLOOR.
6. ALL DIMENSIONS ARE APPROXIMATE.
7. CONTAINMENT CAPACITY 5150K.
8. PRIMARY TANK SHELL AND HEAD WELDS TO BE AS SPECIFIED IN UL142.
9. ANY JOINT NOT DETAILED SHALL BE A CONTINUOUS FULL FILET WELD.
10. A 6" WIDE X 10" LONG X 8" THICK CONCRETE PAD REINFORCED WITH 60K 10-10 MM MUST BE PROVIDED TO PROTECT THE TANK FROM DAMAGE. THE BOLLARDS MUST BE MADE OF SCHED STEEL PIPE. CONCRETE FILLED AND SET IN SET IN CONCRETE FOOTINGS. THE BOLLARDS SHALL BE A MINIMUM OF 4" ABOVE GRADE. BOLLARDS SHALL BE PLACED NO MORE THAN 4' APART.



500 GAL DIESEL FUEL TANK - SECTION AA
SCALE: 1"=2'-0"

ITEM	DESCRIPTION
1	AREO MODEL 1701, 18 GPM PUMP WITH METER
2	4"-8 OZ. EMERGENCY VENT - SHIP LOOSE
3	EMERGENCY VENT OVERFLOW CHUTE
4	VENT DEFLECTOR ASSEMBLY
5	2" LEVEL GAUGE - SKULLY GOLDEN GAUGE
6	1" OVERFLOW PIPE
7	FILL CONTAINMENT CHAMBER
8	HISKEY AUTOMATIC NOZZLE
9	3/4" X 12' UL LISTED FIBEL HOSE
10	OPW "SWERVEK" WITH STAMPERING HOSE
11	OPW 2" ALUMINUM NORMAL VENT CAP
12	2" FILL ADAPTER AND CAP
13	1" SCH. 40 SUCTON PIPE
14	2" VENT WHISTLE
15	1 1/2" L (2)
16	2" PIPE FITTING
17	2" PIPE STUB T.O.E.
18	4" PIPE STUB T.O.E.

AREO-POWER
UNITIZED FUELER, INC.
103 SALTHITTON BLVD
SALTHITTON, NY 11787

500 GAL GENERIC
DIESEL FUEL TANK
FOR SUFFOLK COUNTY

REV	DATE	BY	REVISION DESCRIPTION

DWG NO: SC500DB
SCALE: NOTED
SHEET: 1 OF 1

DWG BY: JF
DATE: 5/98

ALL RIGHTS RESERVED. THIS DRAWING OR ANY PART THEREOF IS NOT TO BE REPRODUCED IN ANY FORM WITHOUT WRITTEN PERMISSION OF AREO-POWER UNITIZED FUELER, INC.