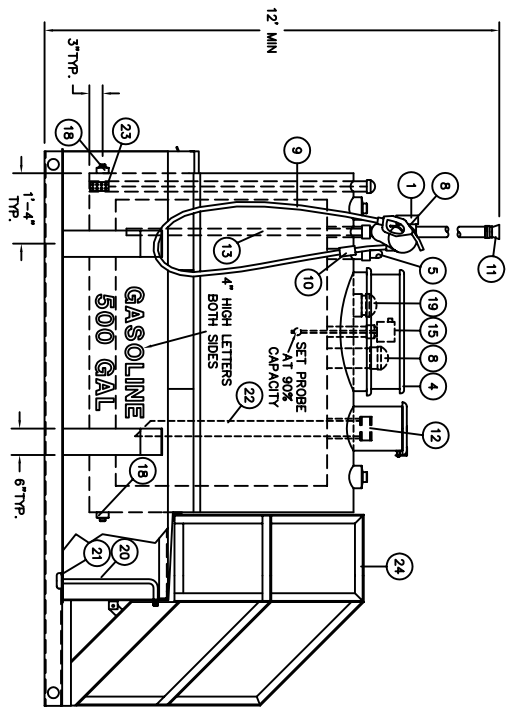


**500 GAL GASOLINE TANK - PLAN**  
SCALE: 1"=2'-6"

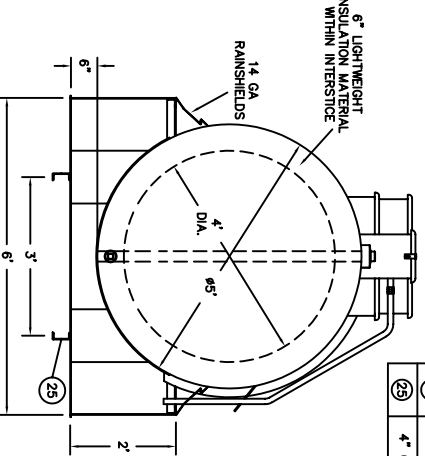


**500 GAL GASOLINE TANK - ELEVATION**  
SCALE: 1"=2'-6"

**NOTES:**

1. PRIMARY TANK: INNER & OUTER SHELL - 10 GA. HEAD - 10 GA. CONTAINMENT: 7 GA.
2. MATERIAL - MILD CARBON STEEL
3. FACTORY TEST AT 5-7 PSIG.
4. UNIT TO BE UL 2085 LISTED AND LABELED.
5. EXTERIOR FINISH (INCLUDING INTERIOR OF DIKE) - SS-C-377 BRUSH OFF BLAST CLEANING & MAB PLASTASTIC 101 WHITE EPOXY.
6. ALL DIMENSIONS ARE APPROXIMATE.
7. CONTAINMENT CAPACITY >110% SPECIFIED
8. TANK SHELL AND HEAD WELDS TO BE AS IN UL742.
9. ANY JOINT NOT DETAILED SHALL BE A CONTINUOUS FULL FILLET WELD.
10. A 8" WIDE X 12'10" LONG X 8" THICK CONCRETE PAD REINFORCED WITH 6x8 10-10 W/M MUST BE PROVIDED. PANS LOCATED IN FIELD MUST BE PROVIDED. PANS MUST BE MADE OF SCHED STEEL PIPE, CONCRETE FILLED AND SET IN THE GROUND TO A DEPTH OF 4". THE BOLLARDS WILL BE A MINIMUM OF 4" ABOVE GRADE. BOLLARDS SHALL BE PLACED NO MORE THAN 4' APART.
11. A WARRICK ALARM PANEL MODEL DMS 572 IS TO BE SUPPLIED AND SHIPPED LOOSE WITH TANK. PANEL MUST BE INSTALLED IN ACCORDANCE WITH NEC REQUIREMENTS FOR HAZARDOUS LOCATIONS.

ITEM	DESCRIPTION
1	MODEL T701, 18 GPM PUMP WITH METER
2	4"-8 OZ. EMERGENCY VENT - SHIP LOOSE
3	EMERGENCY VENT OVERFLOW CHUTE
4	VENT DEFLECTOR ASSEMBLY
5	2" LEVEL GAUGE
6	1" OVERFLOW PIPE
7	FILL CONTAINMENT CHAMBER
8	HUSKY AUTOMATIC NOZZLE
9	3/4" X 12' UL LISTED FUEL HOSE
10	OPW "SAFEBREAK" WITH STRAIGHTENING HOSE
11	2" PRESSURE/VAC VENT 2 OZ / 1 OZ
12	4" COAX FILL ADAPTER AND CAP
13	1" SCH. 40 SUCTION PIPE
14	4" PLUGGED FITTING
15	WARRICK FT SERIES HIGH LEVEL ALARM PROBE
16	1/2" DRAIN FITTING WITH PLUG
17	DRIP PAN WITH 2" LIP
18	2" PLUGGED FITTING
19	4" INTERSTITIAL EMERGENCY VENT
20	3/4" PUMP/OUT PIPE
21	3" PIPE CAP SWAMP
22	COAXIAL DROP TUBE
23	WARRICK MODEL DLP LEAK DETECTOR
24	OSHA STAIRS / PLATFORM
25	4" CHANNEL SUPPORTS



**500 GAL GASOLINE TANK - SECTION AA**  
SCALE: 1"=2'-6" PIPING AND ACCESSORIES NOT SHOWN FOR CLARITY

**ARCO-POWER**  
UNITIZED FUELER, INC.  
103 SMITHTOWN BLVD  
SMITHTOWN, NY 11787

CLIENT:  
500 GAL  
GENERIC GASOLINE  
WORK LOCATION:

REV	DATE	BY	REVISION DESCRIPTION

DWG NO: SC6500G-B  
SCALE: 1"=2'-6" DWG BY: JF  
SHEET: 1 OF 1 DATE: 10/96

ALL RIGHTS RESERVED. THIS DRAWING OR ANY PART THEREOF SHALL BE REPRODUCED IN ANY MANNER WITHOUT THE WRITTEN PERMISSION OF ARCO-POWER UNITIZED FUELER, INC.