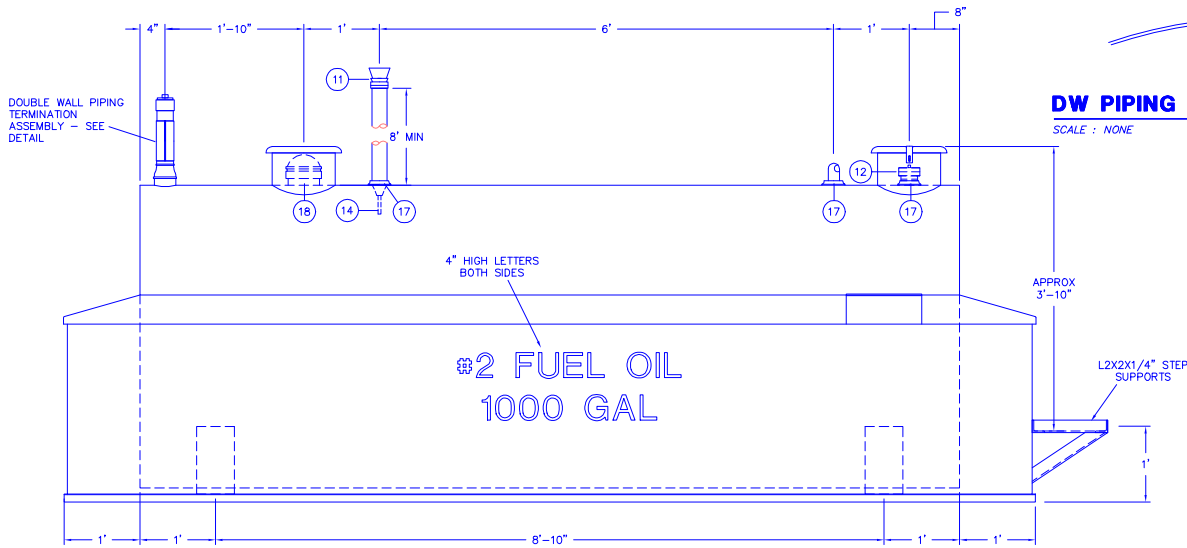


1000 GAL FUEL OIL TANK - PLAN

SCALE : 1"=1'-0"

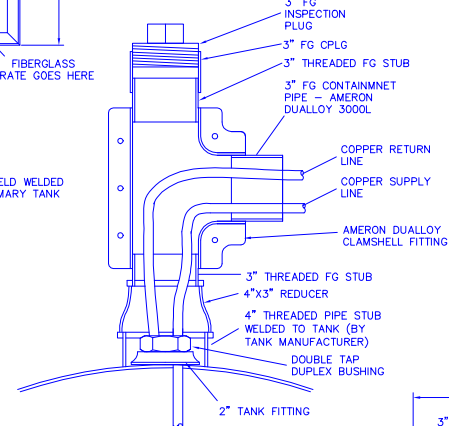


1000 GAL FUEL OIL TANK - ELEVATION

SCALE : 1"=1'-0"

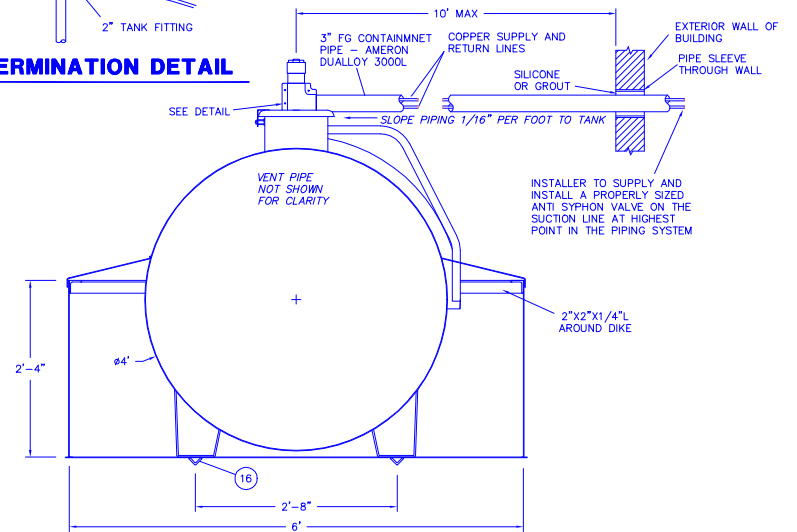
NOTES:

1. PRIMARY TANK:
SHELL - 7 GA. HEAD - 7 GA.
CONTAINMENT: 7 GA.
2. MATERIAL - MILD CARBON STEEL
3. FACTORY TEST AT 5-7 PSIG.
4. ENTIRE UNIT UL LISTED AND ARE FOR OUTDOOR USE.
5. EXTERIOR FINISH (INCLUDING INTERIOR OF DIKE) - SSPC-SP7 (BRUSH OFF BLAST CLEANING) & MAB PLYMATIC 101 WHITE EPOXY.
6. ALL DIMENSIONS ARE APPROXIMATE.
7. CONTAINMENT CAPACITY >150%
8. PRIMARY TANK SHELL AND HEAD WELDS TO BE AS SPECIFIED IN UL142.
9. ANY JOINT NOT DETAILED SHALL BE A CONTINUOUS FULL FILLET WELD.
10. A 8' WIDE X 15' LONG X 8" THICK CONCRETE PAD REINFORCED WITH 6X6 10-10 WMM MUST BE PROVIDED. TANKS LOCATED IN HEAVILY TRAFFICKED AREAS MUST BE PROTECTED BY TRAFFIC BOLLARDS. THE BOLLARDS MUST BE MADE OF SCH80 STEEL PIPE, CONCRETE FILLED AND SET IN THE GROUND TO A DEPTH OF 4'. THE BOLLARDS WILL BE SET IN CONCRETE FOOTINGS. THE BOLLARDS SHALL BE A MINIMUM OF 4' ABOVE GRADE. BOLLARDS SHALL BE PLACED NO MORE THAN 4' APART.



DW PIPING TERMINATION DETAIL

SCALE : NONE



1000 GAL FUEL OIL TANK - SECTION AA

SCALE : 1"=1'-0"

ITEM	DESCRIPTION
①	
②	6"-8 OZ. EMERGENCY VENT - SHIP LOOSE
③	EMERGENCY VENT OVERFLOW CHUTE
④	VENT DEFLECTOR ASSEMBLY
⑤	2" LEVEL GAUGE - SKULLY GOLDEN GAUGE
⑥	1" OVERFLOW PIPE
⑦	FILL CONTAINMENT CHAMBER
⑧	
⑨	
⑩	
⑪	OPW 2" ALUMINUM NORMAL VENT CAP
⑫	2" FILL ADAPTER AND CAP
⑬	
⑭	2" VENT WHISTLE
⑮	
⑯	1 1/2" L (2)
⑰	2" FNPT FITTING
⑱	6" PIPE STUB T.O.E.